

2012-2013 Fact Sheet

Physical Therapist Assistant Education Programs

June 2013

This Fact Sheet is designed to provide the education community with current and historical information about physical therapist education programs, students and faculty. The data included in this Fact Sheet are taken from the following sources:

- The 2012 Annual Accreditation Report submitted by accredited programs in December 2012 (n=291)
- The 2010 Annual Accreditation Report submitted by accredited programs in December 2011 (n=236)
- The 2008 Annual Accreditation Report submitted by all programs in December 2008 (n=222)
- The 2007 Annual Accreditation Report completed in October 2007 by all accredited programs (n= 233)
- The 2006 Annual Accreditation Report
- The 2005 Annual Accreditation Report
- The 2004 Biennial Accreditation Report
- The 2002 Biennial Accreditation Report
- The 2000 Biennial Accreditation Report
- Previous surveys of the PTA educational programs conducted by the Education Division
- Department of Accreditation records
- Licensure pass rate information provided by the FSBPT on April 2004, April 2005, April 2006, April 2007, March 2011, and April 2012.

CONTENTS

[Program Data](#)

[Number and Distribution of Programs](#)

[Financing PTA Education](#)

[Measures of Program Length](#)

[Credits Required](#)

[Student Workload](#)

[Curricular Format and Models](#)

[Clinical Education](#)

[Outcomes](#)

[Student Data](#)

[Admissions](#)

[Enrollment](#)

[Graduates](#)

[Faculty Data](#)

[Number](#)

[Student to Faculty Ratio](#)

[Workload](#)

[Years as Faculty](#)

[Demographics](#)

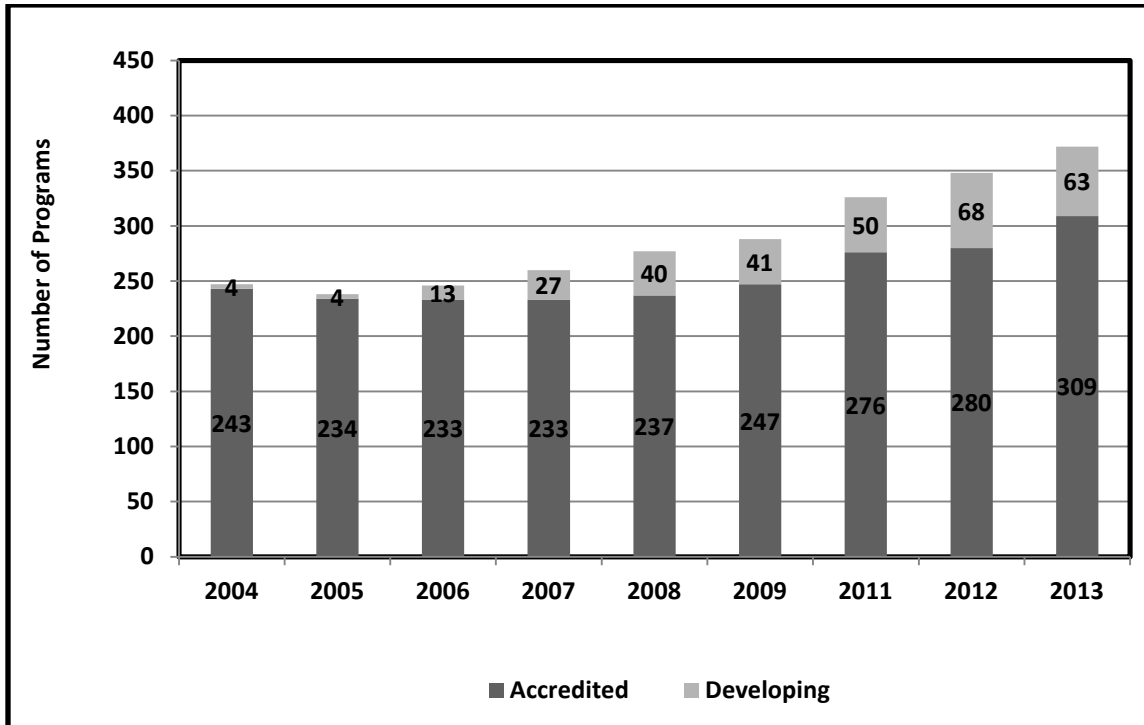
[Degrees Held](#)

[Rank, Tenure Status](#)

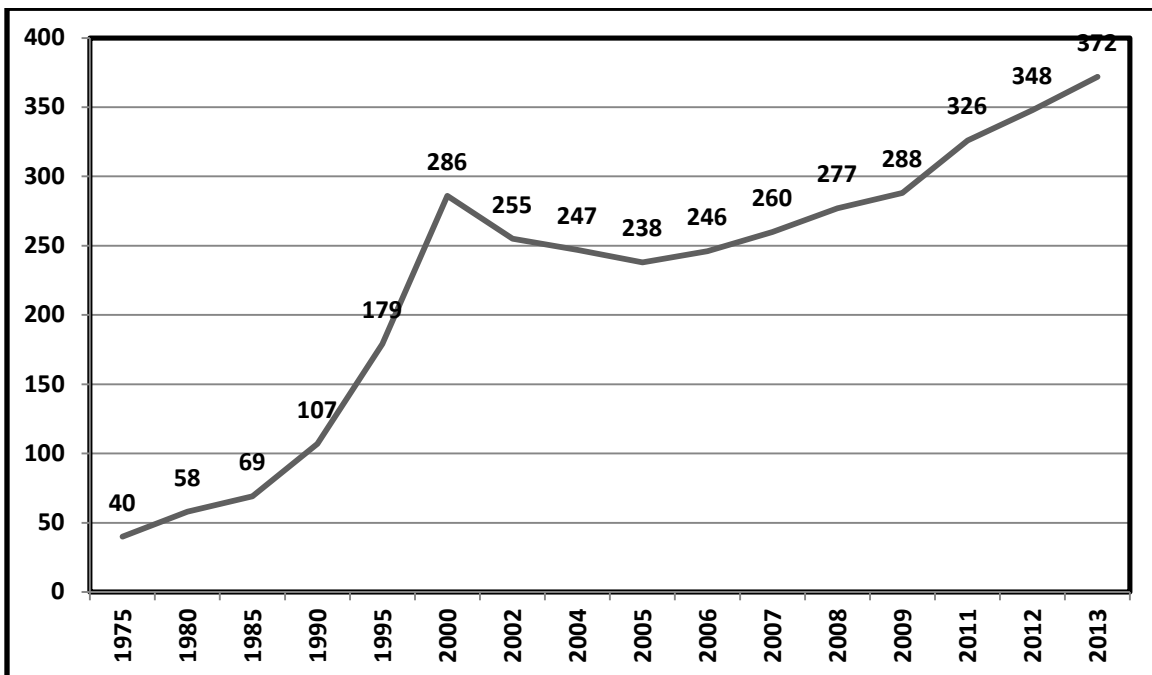
[Salaries](#)

NUMBER AND DISTRIBUTION OF PTA PROGRAMS

Number of Accredited and Developing PTA Programs (2004 - 2013)



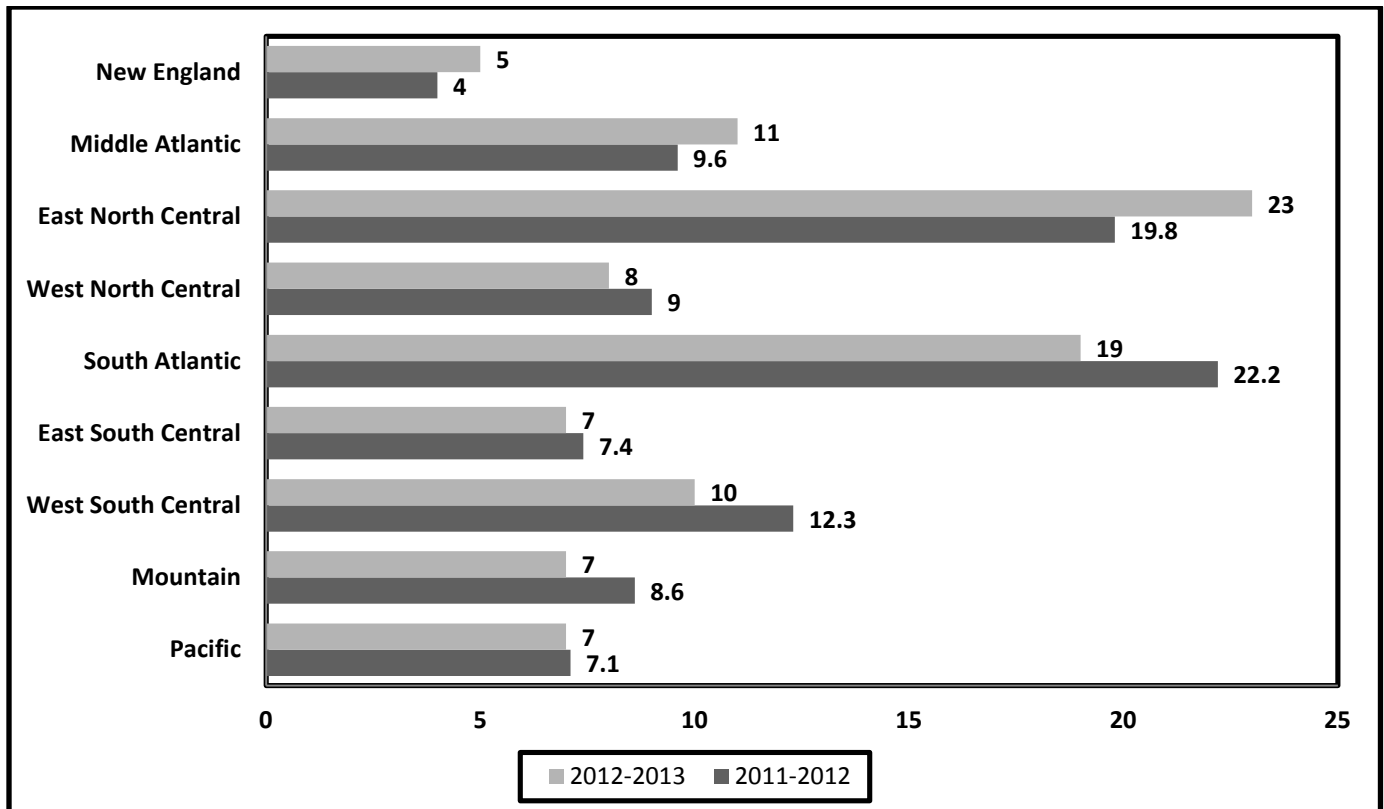
Number of Accredited and Developing PTA Programs 1969 – 2012



Distribution of Accredited and Developing PTA Programs by Geographical Region

	2012		2013	
	#	% of programs	#	% of programs
New England CT, ME, MA, NH, RI, VT	13	4%	13	4%
Middle Atlantic NJ, NY, PA	31	9.6%	29	9.9%
East North Central IL, IN, MI, OH, WI	64	19.8%	61	20.9%
West North Central IA, KS, MN, MO, NE, ND, SD	29	9%	26	8.9%
South Atlantic DE, DC, FL, GA, MD, NC, SC, VA, WV	72	22.2%	58	19.9%
East South Central AL, KY, MS, TN	24	7.4%	25	8.5%
West South Central AR, LA, OK, TX	40	12.3%	34	11.6%
Mountain AZ, CO, ID, MT, NV, NM, UT, WY	28	8.6%	28	7.5%
Pacific AK, CA, HI, OR, WA	23	7.1%	18	6.1%

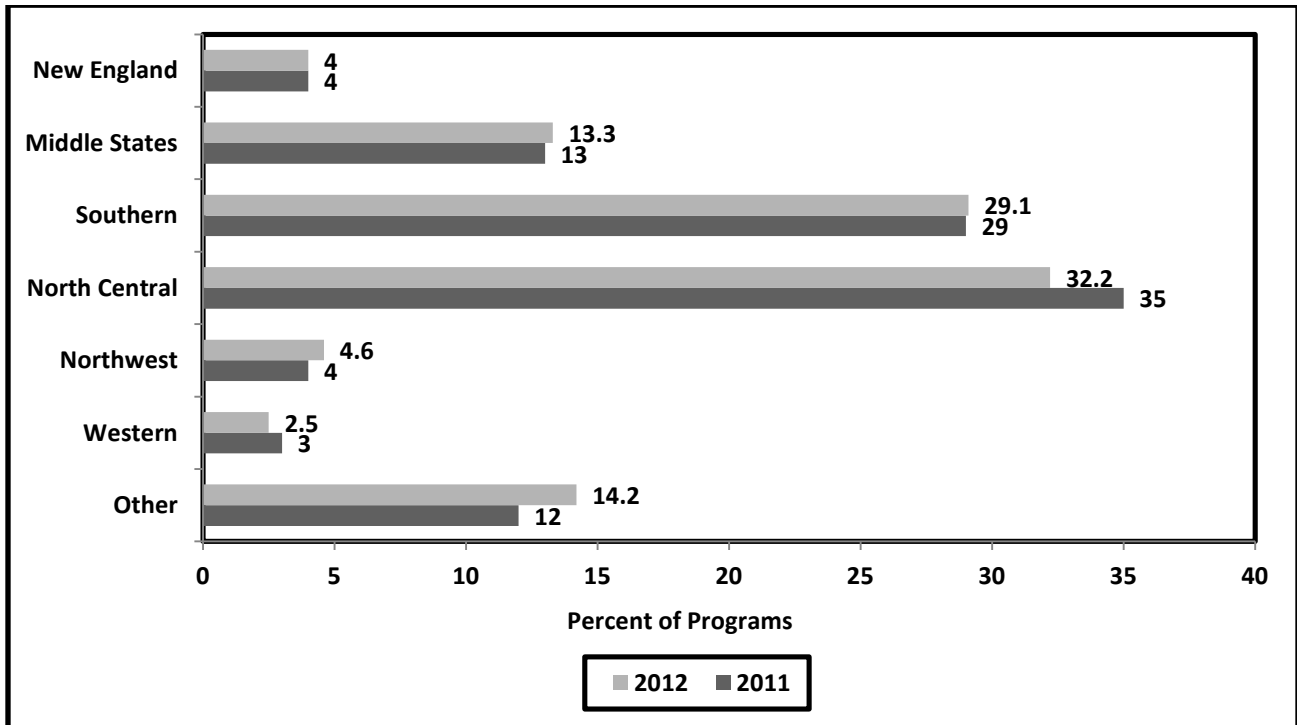
Percentage of Accredited and Developing PTA Programs by Geographic Region



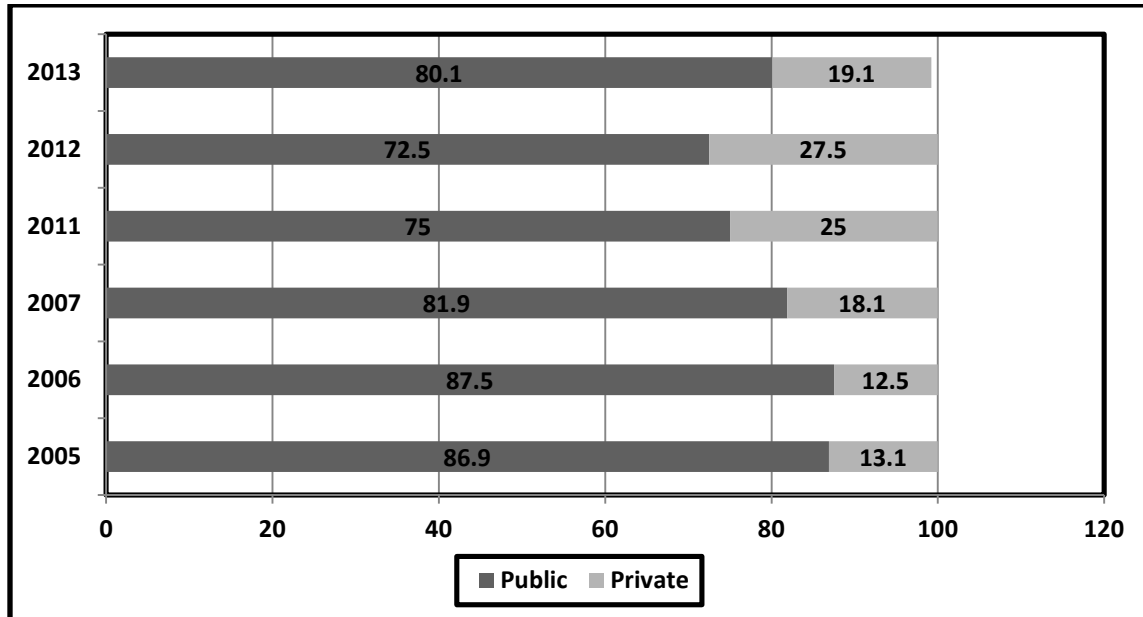
Distribution of Accredited and Developing PTA Programs by Accrediting Region

	2004	2005	2006	2007	2011	2012
New England	13	12	11	13	14	13
Middle States	46	44	42	40	43	43
Southern	78	77	81	84	95	94
North Central	85	86	88	94	114	104
Northwest	8	7	10	11	13	15
Western	7	5	6	7	9	8
Other	6	4	8	10	38	46

Percentage of Accredited and Developing PTA Programs by Accrediting Region



Distribution of Accredited and Developing PTA Programs by Type of Institution



Distribution of Accredited PTA Programs by Carnegie Classification

Classification	Number of Programs	Number of Programs	Number of Programs
	2011	2012	2013
Doctoral/Research Universities	0	0	1
Research Universities (very high research activity)	0	0	0
Research Universities (high research activity)	1	1	1
Master's Colleges and Universities (larger programs)	4	4	4
Master's Colleges and Universities (medium programs)	3	3	2
Master's Colleges and Universities (smaller programs)	5	5	4
Baccalaureate Colleges – Diverse Fields	8	14	11
Baccalaureate/Associate's Colleges	20	16	12
Associate's--Public Rural- serving Small	3	4	3
Associate's--Public Rural- serving Medium	61	61	56
Associate's--Public Rural- serving Large	55	52	53
Associate's--Public Suburban-serving Single Campus	19	20	18
Associate's--Public Suburban-serving Multicampus	18	18	18
Associate's--Public Urban-serving Single Campus	11	10	10
Associate's--Public Urban-serving Multicampus	39	34	39
Associate's--Public Special Use	1	1	1
Associate's--Private Not-for-profit	5	5	4
Associate's--Private For-profit	40	42	27
Associate's--Public 2-year colleges under 4-year universities	6	7	7
Associate's--Public 4-year Primarily Associate's	4	4	4
Special Focus Institutions— Medical schools and medical centers	2	2	2
Special Focus Institutions— Other health professions schools	7	6	7
Not Classified	14	15	8

FINANCING PTA EDUCATION

Tuition, Fees and Other Costs

		Public			Private		
		2010-2011	2011-2012	2012-2013	2010-2011	2011-2012	2012-2013
Annual tuition (in district)	Mean Range	\$3,799 \$360-\$37,500	\$3,821 \$534-\$12,242	\$4,083 \$510-\$28,420	\$17,019 \$9,254-\$26,330	\$17,366 \$1,488-\$28,620	\$19,379 \$4,183-\$37,780
Annual tuition (out of district)	Mean Range	\$8,411 \$1,207-\$25,801	\$8,443 \$1,287-\$25,560	\$8,844 \$989-\$27,173	---	---	---
Annual fees	Mean Range	\$610 \$0-\$5735	\$647 \$0-\$6,134	\$882 \$0-\$6,527	\$662 \$0-\$4,455	\$526 \$0-\$6,134	\$980 \$0-\$6,527
Other Program Expenses	Mean Range	\$2,100 \$0-\$9,300	\$2,167 \$0-\$9,300	\$2,281 \$0-\$9,300	\$1,665 \$0-\$6,138	\$2,143 \$0-\$5,356	\$2,422 \$0-\$12,688
Total cost of technical program in district (not incl. room & board)	Mean Range	\$9,915 \$2,421-\$56,233	\$10,242 \$1,948-\$34,119	\$10,359 \$2,507-\$33,760	\$30,086 \$8,175-\$47,250	\$33,348 \$15,672-\$51,990	\$35,366 \$16,396-\$61,585
Total cost of technical program out of district (not incl room and board)	Mean Range	\$18,430 \$1,209-\$50,010	\$19,384 \$4,790-\$165,349	\$18,979 \$3,728-\$49,856	---	---	---

PTA Program Expenses

		AY 2011-2012	AY 2012-2013
Total Budgeted Operating Expenses (excluding salary & benefits)	Range	\$600-\$2,210,344	\$1,150-\$903,818
	Mean	\$46,668	\$45,694
Total Budgeted Salary Expenses (excluding benefits)	Range	\$80,896-\$887,819	\$36,361-\$871,017
	Mean	\$208,938	\$195,784
Operating and salary expense per enrolled student	Range		
	Mean		

PTA Program Expenses by Type of Institution (AY 2012-2013)

		Public	Private
Total Budgeted Operating Expenses (excluding salary & benefits)	Range	\$1,150-\$903,818	\$1,150-\$877,493
	Mean	\$25,260	\$62,064
Total Budgeted Salary Expenses (excluding benefits)	Range	\$36,361-\$782,300	\$100,154-\$868,858
	Mean	\$182,056	\$222,109
Operating and salary expense per enrolled student	Range	\$1,367-\$60,432	\$2,140-\$40,337
	Mean	\$6,094	\$10,011

MEASURES OF PTA PROGRAM LENGTH

Length (in weeks) of Technical Curriculum (all program types)

Academic Phase (Classroom and Laboratory Instruction)	Mean	Range
2003-04	52.8	16-134
2004-05	52.3	16-86
2009-10	48.6	23-86
2011-12	N/A	N/A
2012-13	N/A	N/A
Full-time Clinical Education		
2003-04	14.3	0-23
2004-05	15.8	5-23
2009-10	14.9	6-20
2011-12	14.9	6-20
2012-13	14.7	6-20
Total Length		
2003-04	67.1	28-152
2004-05	68.1	28-100
2009-10	63.5	37-96
2011-12	64.1	36-99
2012-13	63.0	26-97

CREDITS REQUIRED

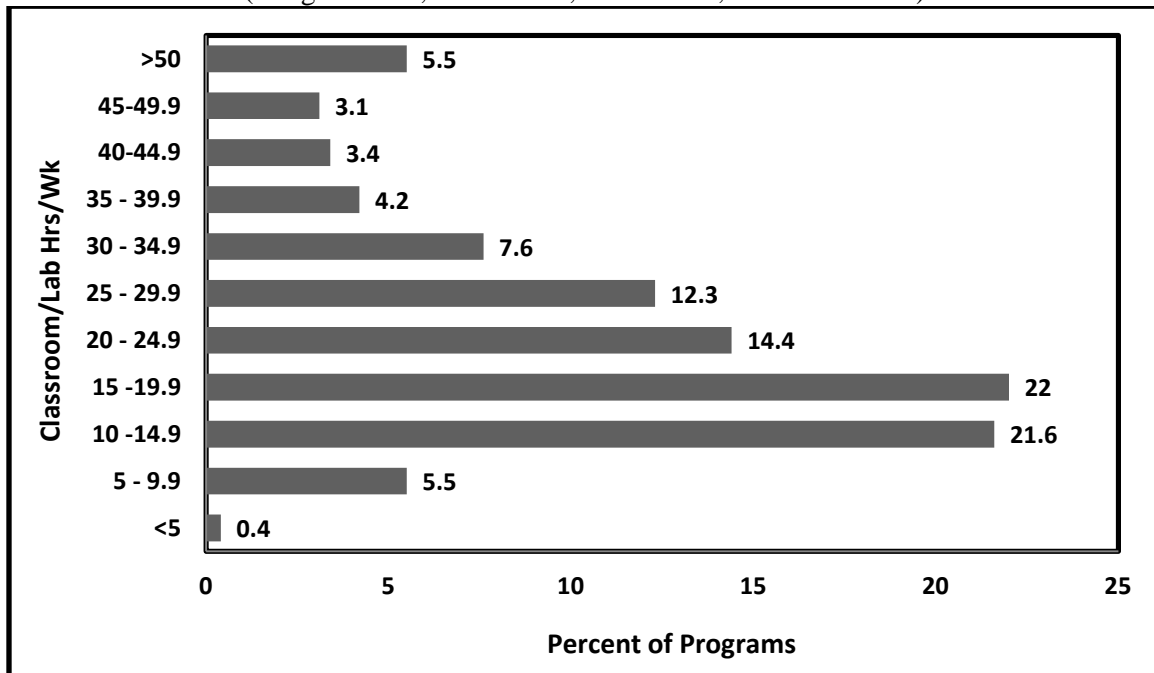
Pre-technical and Technical Credits Required By Type of Program

		Integrated Two-Year				One-Plus-One				All Programs			
Year		2007	2010	2011	2012	2007	2010	2011	2012	2007	2010	2011	2012
Total Credits	Mean	75.0	71.9	72.1	71.6	78.0	76.6	76.8	74.5	76.0	72.9	73.4	72.1

STUDENT WORKLOAD

Student Contact Hours Per Week in Class/Laboratory

(Range: 8.6-44, Median: 26, Mean: 28.2, Std. Dev: 12.39)



Curricular Format (2012-2013)

Integrated Two-Year	172
One-Plus-One	71
Other	43

Curricular Models

		2007	2010	2011	2012
Traditional	the curriculum begins with basic science, followed by clinical science and then by physical therapy science	47.9%	46.1%	42.3%	40.1%
Modified Problem-based	the curriculum uses the problem-based model in the later stages, but the early courses (primarily basic sciences) are presented in the more traditional format of lecture and laboratory	9.1%	9%	8.9%	8.3%
Systems-based	the curriculum is built around physiological systems (musculoskeletal, neuromuscular, cardiopulmonary, etc.)	5.9%	5%	6%	5.5%
Case-based	the curriculum utilizes patient cases as unifying themes throughout the curriculum	0.5%	0.4%	0.4%	0.3%
Guide-based	the curriculum is built around the disability model, the patient management model, and the preferred practice patterns included in the <i>Guide to Physical Therapist Practice</i>	0.5%	0.4%	0.4%	0.7%
Problem-based	the entire curriculum (including basic and clinical science content) is built around patient problems that are the focus for student-centered learning through the tutorial process and independent activities	0.5%	0%	0.4%	0.3%
Hybrid	the curriculum is designed as some combination of the above	35.6%	39.1%	41.5%	44.3%

Length of Final Clinical Education Experience (weeks)

		2007	2010	2011	2012
Number of weeks in final clinical experience	Mean	9.0	9.9	9.9	15
	Range	4-21	5-17	4-17	6-21

Clinical Education Trends

	2001-02	2002-03	2003-04	2007-08	2009-10	2011-12	2012-13
Mean number of sites at the beginning of year	87	85	87	101	109	114	118

Issues in the Clinical Education Program

	% Responding "Yes"				
	2005-2006	2007-2008	2010-2011	2011-2012	*2012-2013
Restructured or redesigned curriculum to accommodate difficulties in obtaining clinical placements?	NA	NA	NA	NA	NA
Rescheduled or redesigned clinical education in order to accommodate clinical placements?	NA	NA	NA	NA	NA
Changed a requirement that students have certain types of experiences (e.g., rehab, acute care)?	N/A	3.2	2.1	2	25
Students been placed in clinical sites for which they have not had prior didactic instruction?	8.8	10.1	9.3	10	8.1
Students been placed in clinical sites at which clinical educators have not been adequately prepared?	0.9	2.3	0.8	2	2.8
Delayed student(s) graduation to accommodate clinical placements?	1.4	0.9	0.4	0.4	0.03

*This information was solicited in a more general manner in previous collections years, which accounts for increasing acknowledgement by programs about clinical education capacity generally rather than types of required experiences (e.g. acute, orthopedic, SNF).

OUTCOMES

Trends in Graduation Rates

Graduating class	2002	2003*	2004*	2005*	2010*	2011*	2012
Mean graduation rate	69.8%	64.5%	68.5%	69.7%	73.24%	75.02%	78.83%
Range	14.7-60	9-100	25-100	16-100	32.7-100	50-100	42-100

*Note: Rate based on the percentage of students admitted to the professional program who complete the program within 150% of the time normally expected for completion.

Program Pass Rates for All First Time Takers of Licensure Exam

	2002	2003	2004*	2005**	2006***	2010****	2011*****	2012*****
Mean	76.2%	76.8%	75.7%	75.4%	76.2%	84%	93.1%	85.3%
Range	18.8-100	20-100	20-100	0-100	0-100	37.5-100	58-100	28.6-100

* Based on data provided by FSBPT 4/11/05

** Based on data provided by FSBPT 4/11/06

*** Based on data provided by FSBPT 4/18/2007

****Based on data provided by FSBPT 3/31/2011

*****Based on data provided by FSBPT 4/1/2012

*****Based on data provided by FSBPT 4/17/2013

Grouped Program Pass Rates of First Time Takers

Pass Rate	Number of Programs							
	2002	2003*	2004**	2005***	2006****	2010*****	2011*****	2012*****
0-9%	0	0	0	6	2	0	1	0
10-19%	1	1	0	0	0	0	0	0
20-29%	5	1	7	2	1	0	0	1
30-39%	7	9	6	4	5	1	3	1
40-49%	4	7	9	10	4	3	5	3
50-59%	28	27	23	26	19	12	6	12
60-69%	39	31	27	31	36	18	22	20
70-79%	28	29	39	20	47	44	34	39
80-89%	37	39	39	48	42	62	65	67
90-99%	14	11	18	20	26	57	75	88
100%	58	61	45	49	32	40	46	53
Total	221	216	225	216	214	237	257	284

* Based on data provided by FSBPT 4/19/04

** Based on data provided by FSBPT 4/11/05

*** Based on data provided by FSBPT 4/11/06

**** Based on data provided by FSBPT 4/18/2007

*****Based on date provided by FSBPT 3/31/2011

*****Based on data provided by FSBPT 4/1/2012

*****Based on data provided by FSBPT 4/17/2013

Employment Rates (%) at 6 Months Post Graduation

	2002	2003	2004	2005*	2006*	2010*	2011*	2012*
Mean	80.7	79.3	97.7	97.3	97.0	98.2	97.3	95.9
Range	0-100	0-100	50-100	19-100	62-100	73-100	60-100	60-100

* Now defined as employment within 6 months of passing the licensure exam

ADMISSIONS

Trends in Admissions

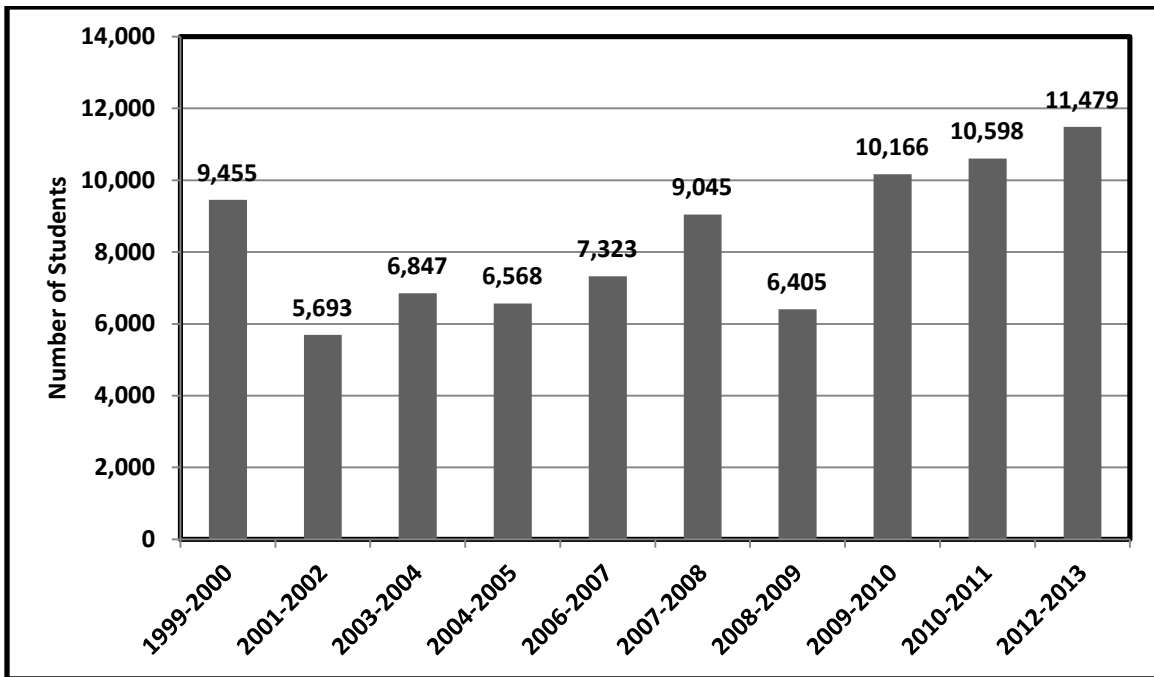
		2004	2006	2007	2010	2011	2012
Planned class size	Mean	24.6	26.6	27	29	28.3	28.91
	Range	8-112	12-160	12-176	0-258	12-83	12-220
Number of applicants	Mean	53.3	72.2	70	108	117	93.60
	Range	10-369	14-575	6-304	0-823	20-1006	24-202
Number of qualified applicants	Mean	30.3	43.4	44	69	74.7	67.57
	Range	0-134	11-241	6-223	0-378	16-343	23-132
Number of applicants offered place in class	Mean	25.8	30.5	31	33	34	30.33
	Range	0-105	5-155	6-194	0-308	12-140	16-63
Number enrolled	Mean	21.1	25.0	26	29	28	24.50
	Range	0-82	10-115	6-192	0-298	12-83	13-37
Number minority enrolled	Mean	4.7	5.5	6	9	5.7	3.23
	Range	0-40	0-44	0-82	0-118	0-51	1-11

Admissions Trends by Public/Private Institutions

Public						
		2006	2007	2010	2011	2012*
Planned class size	Mean	25.1	25	26	28.3	26.14
	Range	12-59	12-70	0-57	12-83	12-83
Number of applicants	Mean	72.2	71	110	114.7	130
	Range	14-575	6-304	0-823	20-1006	12-1,495
Number of qualified applicants	Mean	43.2	44	69	73	75
	Range	11-241	6-223	0-378	16-343	12-294
Number of applicants offered place in class	Mean	29.1	29	30	34.3	29
	Range	5-67	6-71	0-92	12-140	11-96
Number enrolled	Mean	24.2	24	26	28	25
	Range	12-59	6-57	0-57	12-83	8-83
Private						
		2006	2007	2010	2011	2012*
Planned class size	Mean	37.5	37	42	28.3	42.5
	Range	16-160	14-176	14-258	14-64	13-220
Number of applicants	Mean	72.0	66	96	128.3	77
	Range	16-287	16-253	22-321	26-458	9-315
Number of qualified applicants	Mean	44.9	45	69	82.3	45
	Range	11-155	16-194	18-308	18-200	7-127
Number of applicants offered place in class	Mean	40.2	41	50	32	32
	Range	11-155	16-194	17-308	15-68	6-66
Number enrolled	Mean	30.2	35	43	28.3	27
	Range	10-115	13-192	13-298	14-68	6-54

*As of 2012, expansion programs required to report data separate from parent program

Enrollment 1999-2012



Enrollment by Sex

		Female			Male			Total		
		2010	2011	2012	2010	2011	2012	2010	2011	2012
Number of students in all programs		6,979	7,054	7,663	3,187	3,544	3,816	10,166	10,598	11,479
Number of students per program	Mean	30	28	27	14	14	13.2	43	43	40
	Range	6-149	3-72	4-108	2-93	1-68	0-58	13-242	10-112	14-166

Percent of Enrollees by Degree Held on Admission to Technical Program

Degree Held	% enrolled				
	2004	2007	2010	2011	2012
None	86.9%	81.3%	73.7%	71.8%	71.29%
Baccalaureate	12.2%	17.2%	24.6%	26.1%	27%
Master's	0.9%	1.4%	1.6%	1.9%	1.7%
Doctoral	0.03%	0.1%	0.05%	0.1%	.01%

Percent of Students Enrolled by Accrediting Region

Region	2003	2004	2006	2007	2010	2011	2012
New England	4.5	3.8	4.9	4.7	4.1	4.8	4.78
Middle States	20.7	17.8	16.2	18.9	13.7	14.9	15.46
Southern	31.3	31.8	33.9	32.7	35.4	30.9	29.85
North Central	35.1	39.1	36.9	34.7	37.4	37.8	34.90
Northwest	3.1	3.3	3.3	3.7	3.7	4	4.48
Western	2.7	2.3	3.0	3.5	3.0	2.4	2.82
Other	2.5	1.9	1.8	1.8	2.7	5.2	7.70

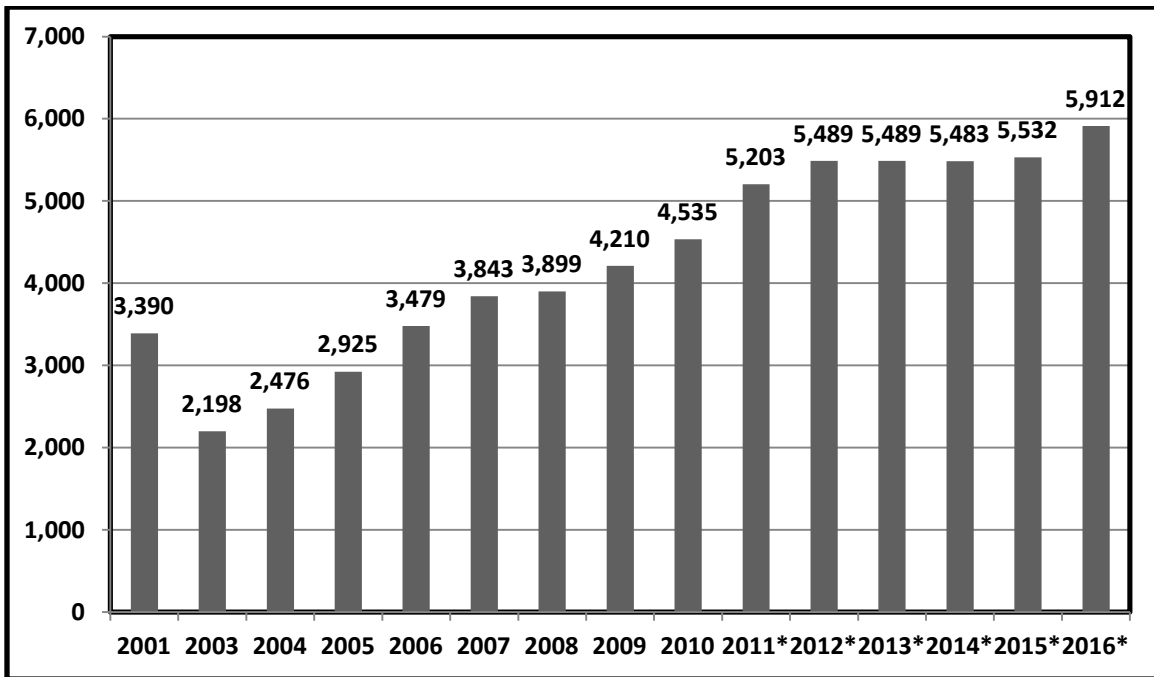
Percentage of Enrollment by Geographical Region

	Enrollment AY 07-08	Enrollment AY 09-10	Enrollment AY 11-12	Enrollment AY 12-13
New England: CT, ME, MA, NH, RI, VT	4.7	3.6	4.8	4.8
Middle Atlantic: NJ, NY, PA	15.0	13.4	11.6	11.8
East North Central: IL, IN, MI, OH, WI	21.8	19.1	22.8	23.1
West North Central: IA, KS, MN, MO, NE, ND, SD	7.9	10.6	9.4	8.1
South Atlantic: DE, DC, FL, GA, MD, NC, SC, VA, WV	22.3	20.5	18.6	20.1
East South Central: AL, KY, MS, TN	7.2	8.1	7.8	7.3
West South Central: AR, LA, OK, TX	11.0	15.1	12.6	10.2
Mountain: AZ, CO, ID, MT, NV, NM, UT, WY	4.3	5.2	6.5	6.5
Pacific: AK, CA, HI, OR, WA	5.7	4.3	5.9	6.8

Ethnicity of Students Enrolled In Physical Therapist Assistant Programs

	04-05 N=6,563	06-07 N=7,323	07-08 N=9,045	09-10 N=10,166	11-12 N=10,598	12-13 N=11,381
American Indian	0.5%	0.5%	0.8%	0.6%	0.6%	0.5%
Asian	2.6%	2.8%	3.2%	2.8%	2.8%	3.4%
African American	9.2%	8.3%	8.1%	5.9%	5.1%	4.9%
Caucasian	78.5%	78.3%	77.6%	80%	80%	79.4%
Hawaiian/ Pacific Islander	--	--	--	0.6%	0.7%	0.6%
Hispanic	7.4%	8.6%	8.1%	7.9%	8%	8%
Other	1.5%	0.8%	1.2%	1.0%	0.8%	1.3%
Unknown	0.3%	0.6%	1.0%	1.6%	2.1%	1.9%

GRADUATES



*Estimated

Number of Graduates per Program

		2001	2002	2003	2004	2005	2007	2010	2011	2012
All Programs	Mean	14.3	10.8	9.7	11.7	14.0	17	19	21.1	20.5
	Range	0-40	0-32	0-35	0-40	0-44	2-61	0-104	0-80	5-133
Public	Mean	17.8	14.1	10.6	9.7	11.7	13.9	16	18	19.22
	Range	0-67	0-40	0-31	0-28	0-38	0-38	2-34	0-54	6-133
Private	Mean	22.8	15.1	11.0	9.9	12.2	15.5	22	25	25.9
	Range	6-53	0-40	0-32	0-35	0-40	4-44	6-61	9-104	5-58

Percentage of Graduates by Geographical Region

Geographical Region:	States	Graduates 2005	Graduates 2007	Graduates 2010	Graduates 2011	Graduates 2012
New England:	CT, ME, MA, NH, RI, VT	3.1	3.4	3.9	4.8	4.0
Middle Atlantic:	NJ, NY, PA	13.0	13.3	11.6	11.2	10.3
East North Central:	IL, IN, MI, OH, WI	21.5	22.7	21.5	22.1	20.1
West North Central:	IA, KS, MN, MO, NE, ND, SD	7.6	7.4	7.7	8.8	8.2
South Atlantic:	DE, DC, FL, GA, MD, NC, SC, VA, WV	21.2	22.1	23.1	19.3	21.6
East South Central:	AL, KY, MS, TN	10.2	8.3	7.8	8	8.5
West South Central:	AR, LA, OK, TX	14.3	12.5	12.7	13.3	12.2
Mountain:	AZ, CO, ID, MT, NV, NM, UT, WY	3.2	5.0	5.7	6.8	7.3
Pacific:	AK, CA, HI, OR, WA	5.9	5.3	6.1	5.6	6.8

Percentage of Graduates by Accrediting Region

Region	2001	2003	2004	2005	2007	2010	2011	2012
New England	4.8	2.5	2.7	3.0	2.6	4.3	4.8	4.0
Middle States	27.2	18.4	17.8	17.5	17.6	16.0	14.9	13.3
Southern	28.6	32.7	35.7	36.8	32.6	30.5	30.9	34.2
North Central	34.4	36.9	35.9	34.4	37.4	35.7	37.8	33.5
Northwest	3.5	4.0	3.2	3.5	3.3	6.4	4	3.9
Western	4.3	3.3	3.4	2.8	3.1	2.1	2.4	2.8
Other	2.1	1.7	1.3	2.0	3.4	4.9	5.2	8.3

Ethnicity of Graduates of Physical Therapist Assistant Programs

	2004	2005	2007	2010	2011	2012
	N=2,476	N=2,925	N=3,843	N=4,535	N=5,252	N=5,868
African American	7.5%	8.7%	6.8%	6.3%	5.1%	5.2%
American Indian/Alaskan Native	0.4%	0.5%	0.8%	0.6%	0.7%	0.5%
Asian	2.5%	2.4%	2.7%	2.6%	2.7%	3.0%
Hawaiian Native/Pacific Islander	---	---	---	0.9%	0.6%	0.8%
Hispanic/Latino	8.6%	7.8%	8.4%	8.0%	7.4%	8.4%
White	79.4%	78.6%	79.3%	79.7%	80.2%	79.4%
Other	2.0%	1.5%	1.0%	0.6%	1%	1.1%
Unknown	0.4%	0.5%	1.0%	1.3%	2.2%	1.7%

FACULTY DATA

Number of Faculty

		2010	2011	2012
Total number of full-time core positions		569	609	702
Total number of part-time core positions		135	168	201
Total FTE core faculty		708	761	886
Full-time core faculty positions per program	Mean	2.4	2.4	2.4
	Range	1-9	1-7	1.7
Part-time core faculty positions per program	Mean	0.6	0.7	.7
	Range	0-13	0-15	0.2-12
Total FTE core faculty per program	Mean	3.0	3.1	3.1
	Range	1-12	0-14	0.3-13
Number of adjunct faculty per program	Mean	1.5	1.4	1.3
	Range	0-15	0-16	1-10
Total FTE of adjunct faculty per program	Mean	0.37	0.34	0.3
	Range	0-4.7	0-5.5	0-4.8

Faculty Vacancies (All Programs)

	2010	2011	2012
Total current vacancies in allocated positions	11	10	19
Total projected vacancies in allocated positions	11	7	19
Total number of new positions to be filled	6	7	6

Core Faculty Turnover

	2007-2008	2010-2011	2011-2012	2012-2013
Number of programs reporting turnover	55	53	50	72
Average for those reporting turnover	42.5%	37.8%	38.3%	42.6%
Range for those reporting turnover	1-100%	1-100%	1-100%	1-100%
Average for all programs	10%	8.5%	7.7%	10.0%
Range for all programs	0-100%	0-100%	0-100%	0-100

Student to Faculty Ratio

		2006	2007	2010	2011	2012
Number of students per core faculty member	Mean	16.4	16	16.5	17.1	15.74
	Range	1-33	4-60	4-40	5-48	2.5-40
Student to all FTE faculty ratio	Mean	15.8	NA	NA	NA	NA
	Range	1.2-55				
Student to faculty ratio in labs	Mean	NA	11	11.6	12.1	11.7
	Range		4-55	4-30	5-34	4-23

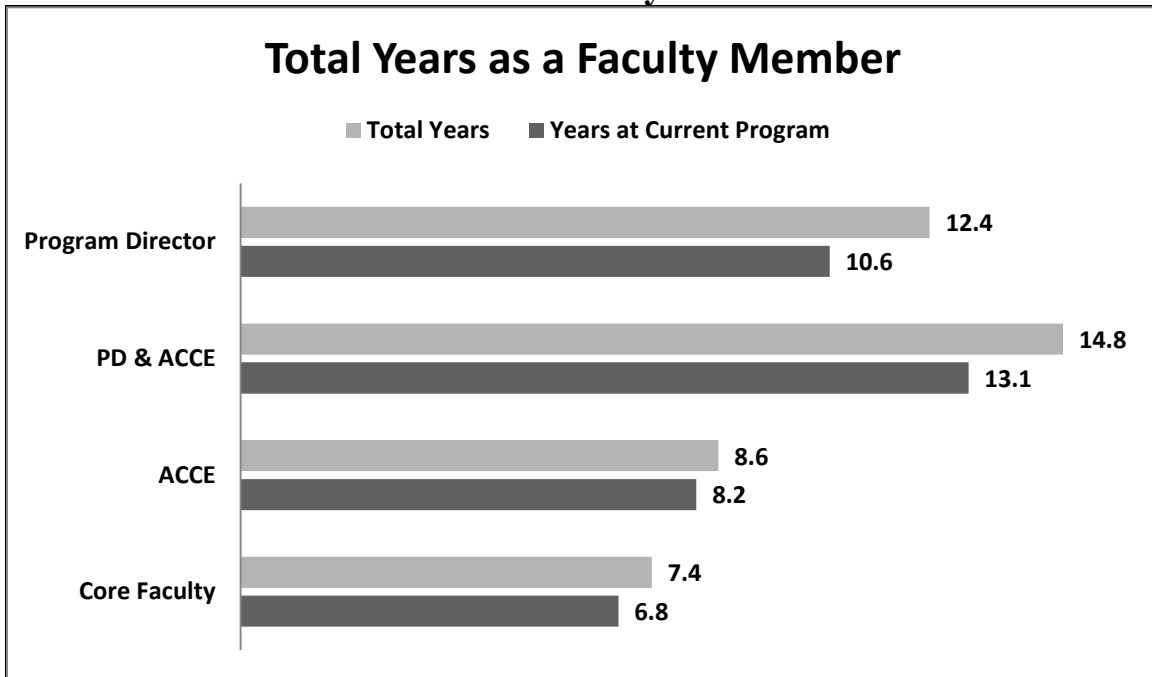
Workload: % Workload Devoted to Teaching

		2007-2008	2010-2011	2011-2012	2012-2013
Program Director	Mean	55.3%	71.2%	52.5%	52.9%
	Range	0-100%	0-100%	1-100%	0-100%
Program Director & ACCE	Mean	56.2%	54.8%	53%	55%
	Range	0-85%	0-95%	0-90%	0-95%
ACCE	Mean	64.7%	62.5%	61.1%	60.6%
	Range	0-100%	0-100%	0-100%	0-100%
Faculty	Mean	81.1%	71.2%	72.5%	73.3%
	Range	0-100%	0-100%	0-100%	0-100

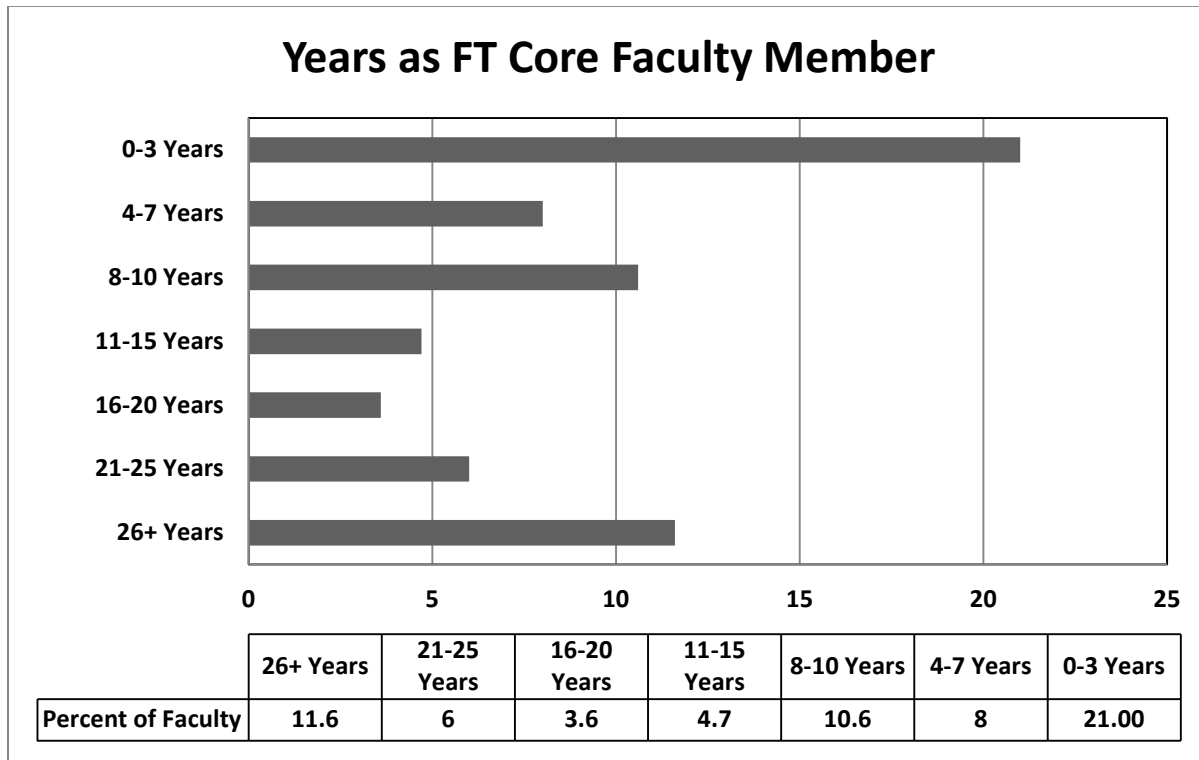
Number of Core Faculty who are Certified Clinical Specialists:

2011-2012	10.9%
2012-2013	11.7%

Years as Faculty - 2013



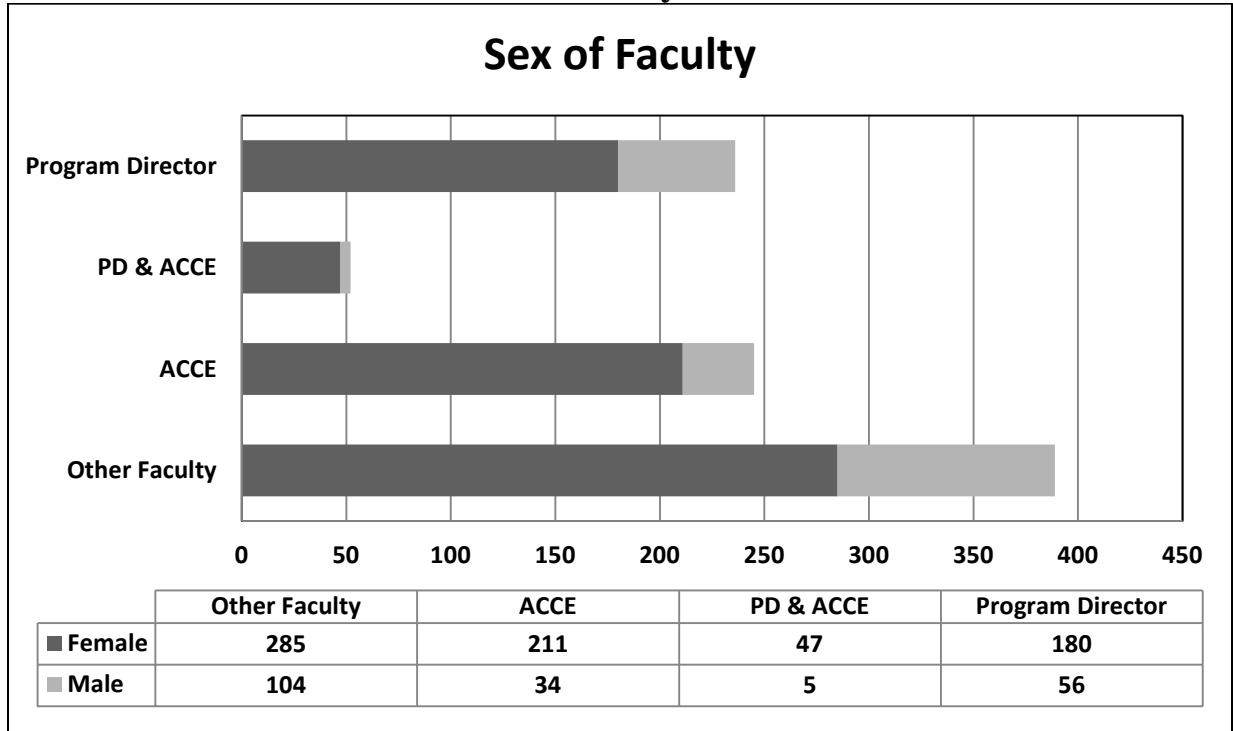
Years as Full-Time Core - 2013



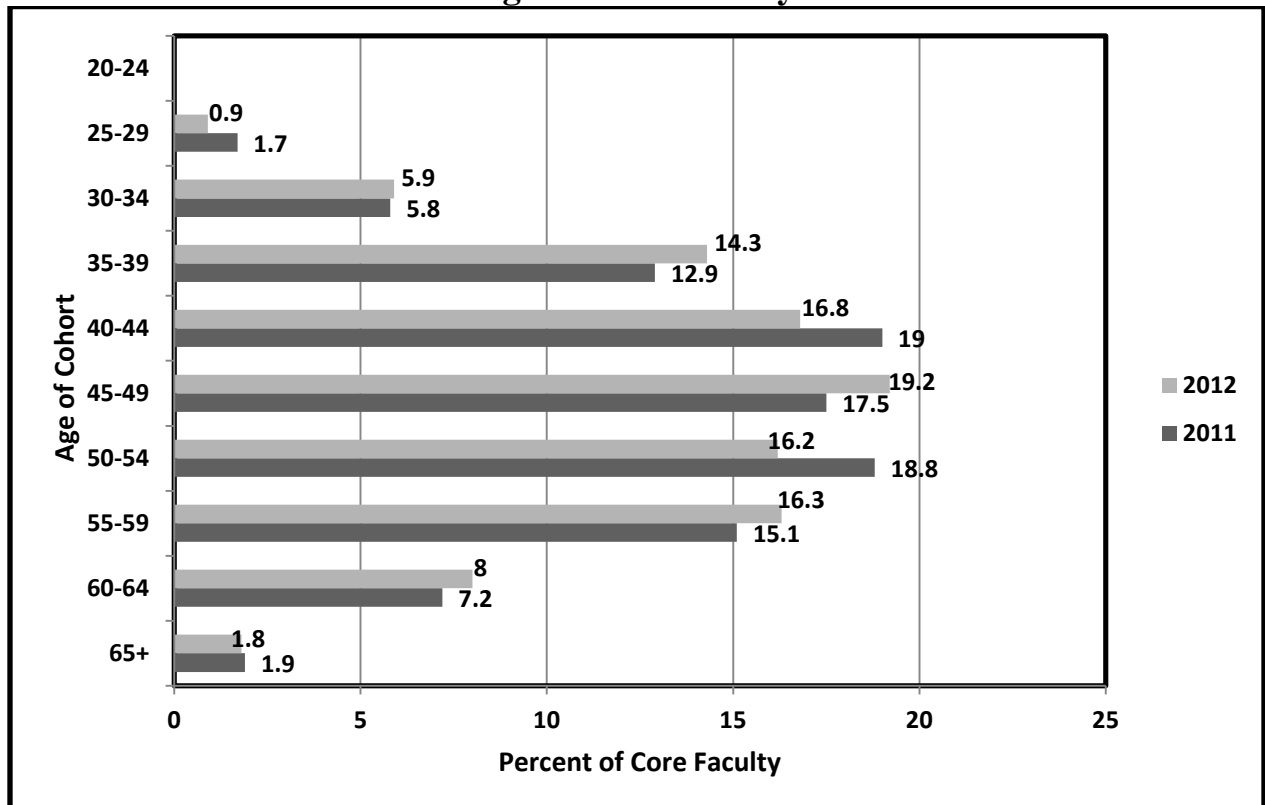
*used all Core Faculty (1.0 FTE or greater)

FACULTY DEMOGRAPHICS

Sex of Faculty - 2013



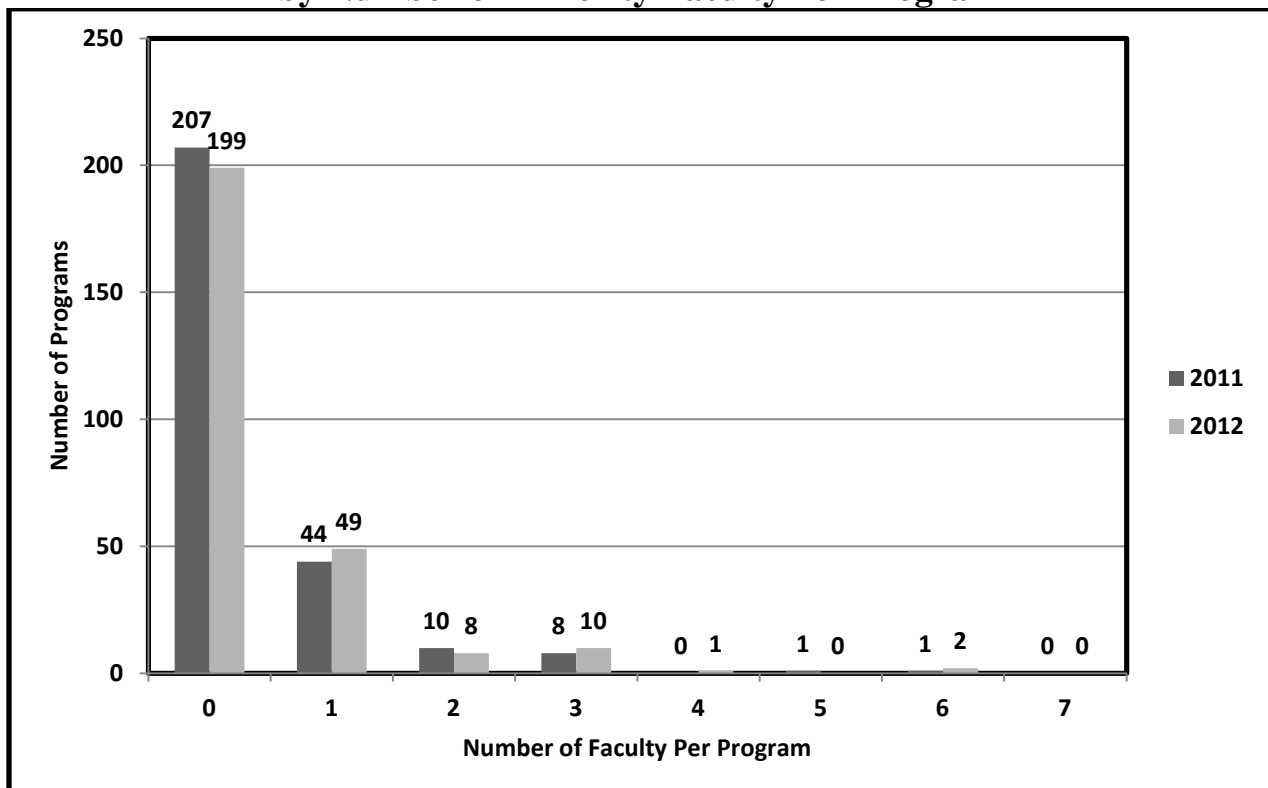
Age of Core Faculty



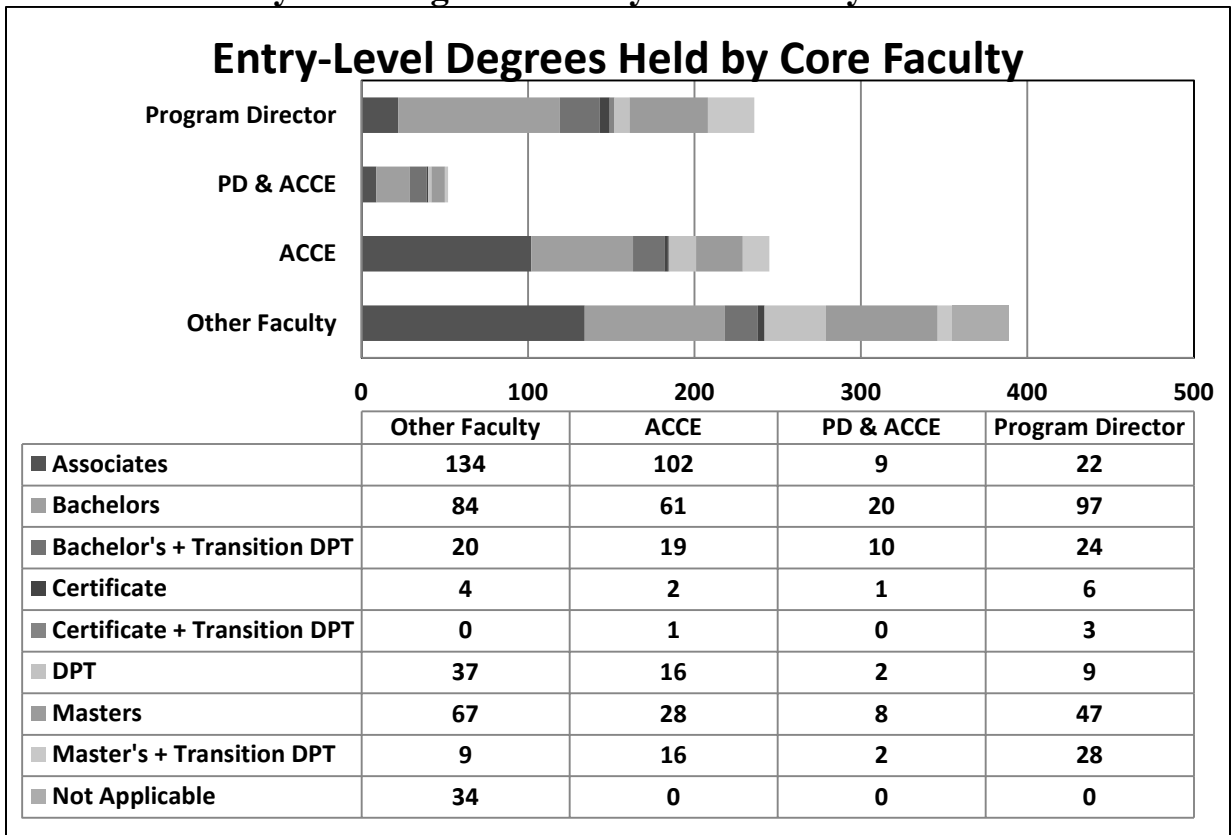
Ethnicity of Faculty (2012-2013)

	Program Director N=288	ACCE N=245	Core Faculty N=389	All Core Faculty N=924	Adjunct Faculty N=1111
Black or African American	6	4	12	22	41
American Indian/ Alaskan Native	0	0	1	1	3
Asian	4	2	3	9	20
White	264	224	324	812	844
Hispanic/Latino of any race	8	9	25	42	27
Native Hawaiian/Pacific Islander	0	0	0	0	4
Two or more races	4	5	7	16	29
Other/Unknown	2	1	17	20	143
Total	288	245	389	924	1111

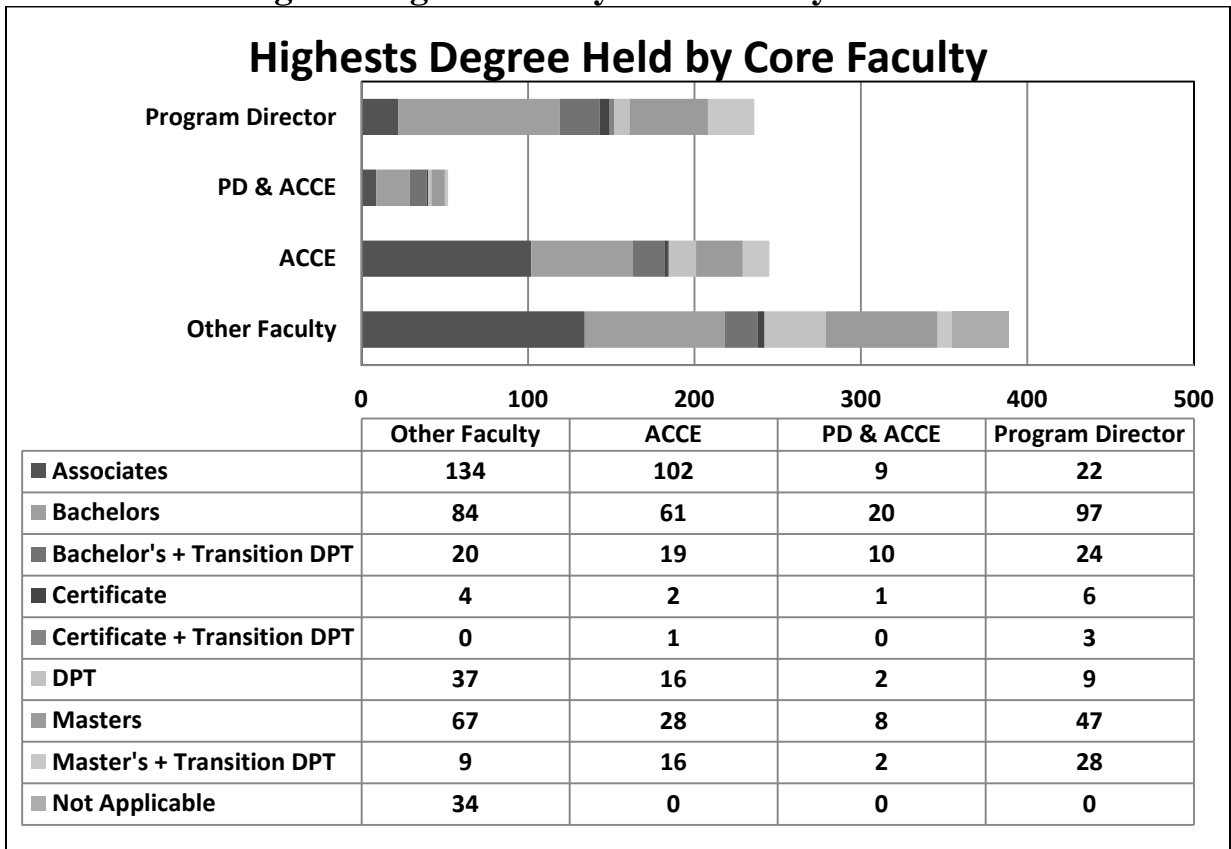
Number of Programs that Have Minority Faculty by Number of Minority Faculty Per Program



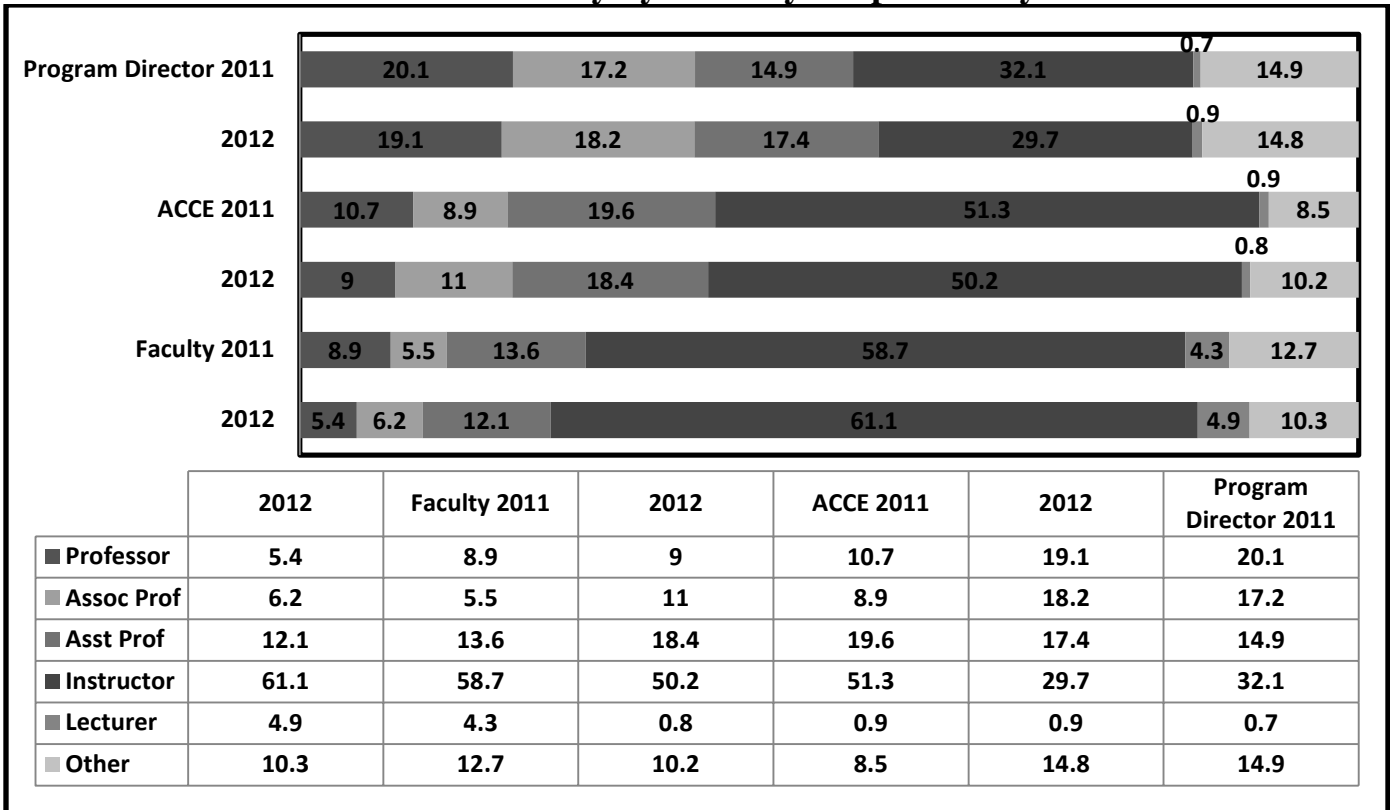
Entry-level Degrees Held by Core Faculty 2012-2013



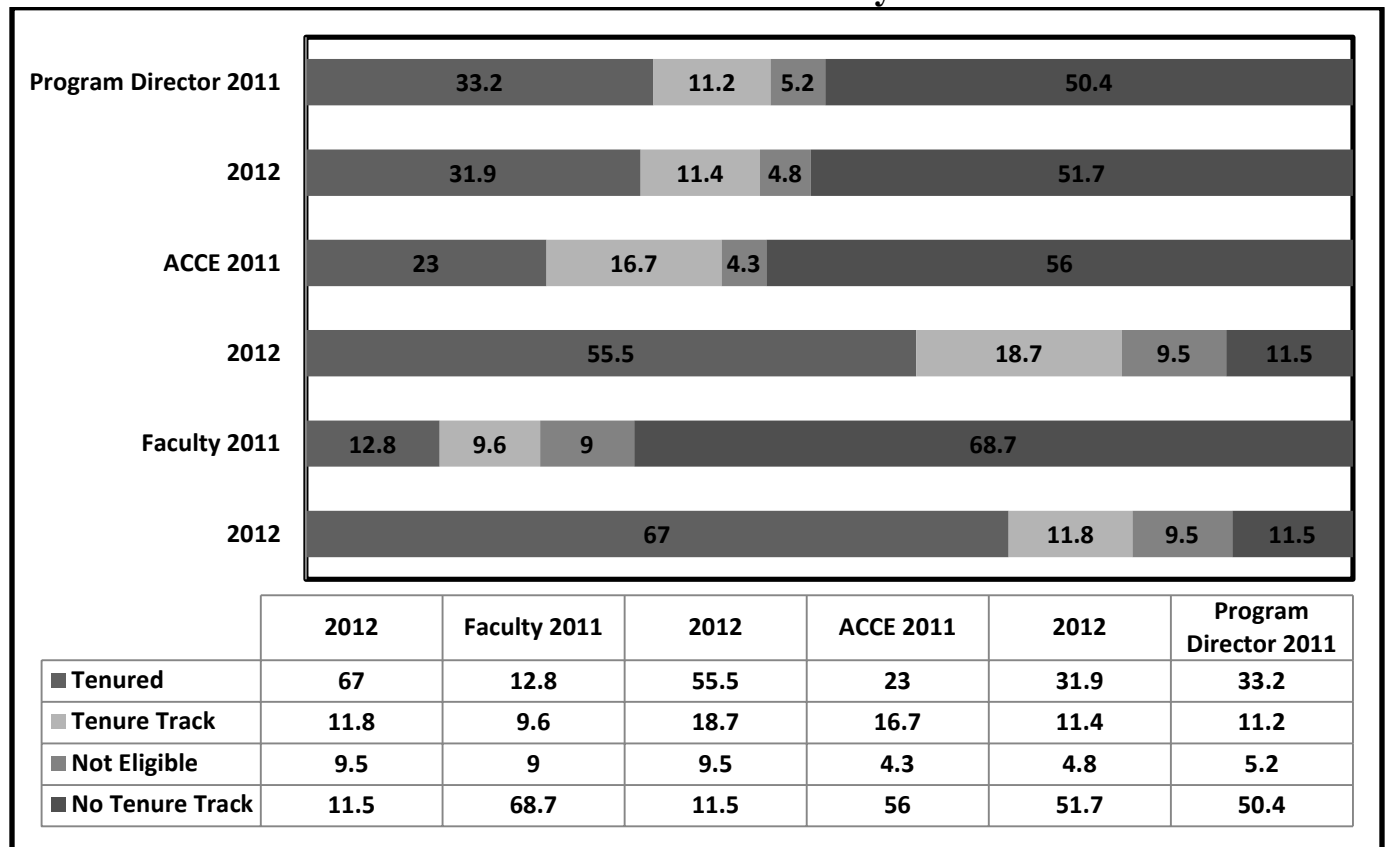
Highest Degree Held by Core Faculty 2012-2013



Rank of Faculty by Primary Responsibility



Tenure Status of Faculty



**Salaries of Program Directors (n=288) in Physical Therapist Assistant Education Programs
by Rank, Length of Appointment and Type of Institution
AY 2012-2013**

	PUBLIC INSTITUTIONS			PRIVATE INSTITUTIONS		
	9 – 9.5 months	10 – 11 months	12 months	9 – 9.5 months	10 – 11 months	12 months
LECTURER N= Mean= Range=		1 ** **	1 ** **			
INSTRUCTOR N= Mean= Range=	11 63,101 51,000-74,700	12 73,797 60,366-99,357	23 72,283 47,750-102,144			12 87,071 54,480-117,352
ASST. PROF. N= Mean= Range=	4 69,441 52,000-89,765	6 70,457 61,656-90,000	11 73,865 55,000-87,536	1 ** **	2 ** **	8 79,793 53,258-100,775
ASSOC. PROF. N= Mean= Range=	5 59,015 52,500-76,729	11 72,413 47,000-111,118	11 79,470 62,374-96,000	1 ** **	1 ** **	8 80,875 68,300-120,000
PROFESSOR N= Mean= Range=	8 77,243 68,360-89,000	10 80,527 56,354-114,000	8 73,413 45,911-92,000		1 ** **	3 85,270 **
OTHER N= Mean= Range=			7 80,365 60,000-95,688			9 87,147 69,000-105,000

Salaries of Program Directors/ACCEs (n=44) in Physical Therapist Assistant Education Programs
by Rank, Length of Appointment and Type of Institution
AY 2012-2013

	PUBLIC INSTITUTIONS			PRIVATE INSTITUTIONS		
	9 –9.5 months	10 – 11 months	12 months	9 – 9.5 months	10 – 11 months	12 months
LECTURER N= Mean= Range=						
INSTRUCTOR N= Mean= Range=	4 74,643 50,281-92,645	4 59,568 45,467-83,921	6 79,609 55,629-101,800			2 ** **
ASST. PROF. N= Mean= Range=		1 ** **	3 85,057 70,828-92,171			1 ** **
ASSOC. PROF. N= Mean= Range=	1 ** **	2 ** **	2 ** **			
PROFESSOR N= Mean= Range=	2 ** **	8 75,136 40,842-96,007	1 ** **			
OTHER N= Mean= Range=			3 85,108 77,067-98,150			

**Salaries of ACCEs (n=) in Physical Therapist Assistant Education Programs
by Rank, Length of Appointment and Type of Institution
AY 2012-2013**

	PUBLIC INSTITUTIONS			PRIVATE INSTITUTIONS		
	9 –9.5 months	10 – 11 months	12 months	9 – 9.5 months	10 – 11 months	12 months
LECTURER N= Mean= Range=		1 ** **	1 ** **			
INSTRUCTOR N= Mean= Range=	22 51,478 40,774-80,000	32 58,541 36,951-86,662	36 59,426 11,675 – 104,000	2 ** **	2 ** **	16 68,116 30,400-104,000
ASST. PROF. N= Mean= Range=	9 57,645 45,826-73,000	9 61,703 45,652-76,000	18 66,803 45,137-104,391	1 ** **	1 ** **	9 68,548 60,008-82,722
ASSOC. PROF. N= Mean= Range=	4 65,391 47,792-89,768	6 67,783 55,000-94,000	7 67,945 52,876-79,000	1 ** **		2 ** **
PROFESSOR N= Mean= Range=	4 89,734 57,377-149,340	3 85,507 **	6 62,275 44,813-86,923	1 ** **	1 ** **	3 56,638 **
OTHER N= Mean= Range=	1 ** **	2 ** **	7 65,983 32,635-81952			6 69.459 61,800-81,000

Salaries of Full-time Faculty (n=) in Physical Therapist Assistant Education Programs
by Rank, Length of Appointment and Type of Institution
AY 2012-2013

	PUBLIC INSTITUTIONS			PRIVATE INSTITUTIONS		
	9 –9.5 months	10 – 11 months	12 months	9 – 9.5 months	10 – 11 months	12 months
LECTURER N= Mean= Range=	1 ** **		2 ** **			1 ** **
INSTRUCTOR N= Mean= Range=	25 38,689 13,440-67,000	24 58,458 15,000-86,242	21 57,373 34,000-101,300	1 ** **	2 ** **	41 57,899 26,000-94,000
ASST. PROF. N= Mean= Range=	5 59,334 49,000-75,980	10 53,627 38,188-70,000	5 61,670 54,428-71,812	4 51,938 31,268-65,150	4 63,608 61,812-68,000	10 64,635 40,510-86,867
ASSOC. PROF. N= Mean= Range=	7 70,974 50,568-108,776	2 ** **	3 71,398 **	1 ** **		1 ** **
PROFESSOR N= Mean= Range=	5 95,889 64,004-145,354	1 ** **	2 ** **			5 64497 45,000-75,474
OTHER N= Mean= Range=	4 37,506 21,500-46,923	2 ** **	3 72,931 **	1 ** **	1 ** **	2 ** **