



AGGREGATE PROGRAM DATA

2018–2019 PHYSICAL THERAPIST EDUCATION PROGRAMS
FACT SHEETS



2018–19 Fact Sheet

Physical Therapist Education Programs

This fact sheet is designed to provide the education community with current and historical information about physical therapist education programs, students, and faculty. Data is taken from the following sources:

THE 2018 ANNUAL ACCREDITATION REPORT, COMPLETED DECEMBER 2018 BY US ACCREDITED PROGRAMS
THE 2017, 2016, 2015, 2013, 2012, 2011, 2010, 2009, 2008, AND 2007 ANNUAL ACCREDITATION REPORTS
THE 2000, 2002, 2004 AND 2006 BIENNIAL ACCREDITATION REPORTS
PREVIOUS SURVEYS OF PT EDUCATIONAL PROGRAMS CONDUCTED BY THE EDUCATION DIVISION
DEPARTMENT OF ACCREDITATION RECORDS
LICENSURE PASS RATE INFORMATION PROVIDED BY THE FEDERATION OF STATE BOARDS OF PHYSICAL THERAPY IN APRIL 2005, APRIL 2006, APRIL 2007, APRIL 2011, APRIL 2012, APRIL 2014, APRIL 2015, APRIL 2016, APRIL 2017, DECEMBER 2017 AND DECEMBER 2018.

Unless otherwise indicated, the data reflects accredited and developing physical therapist education programs in the United States for the academic year 2018–19. All uses of this data should reference the Commission on Accreditation in Physical Therapy Education (CAPTE) as its source and acknowledge that CAPTE bears no responsibility for interpretations presented or conclusions reached based on analysis of this data.

Symbols

Tables in this volume use a series of symbols to alert the reader to special statistical notes. These symbols, and their meanings, are as follows:

- Not available.
- † Not applicable.
- # Rounds to zero.
- ‡ Reporting standards not met.

Originally Published April 22, 2019
(updates made after the date of original publication will be highlighted in yellow)

CAPTE's homepage address is www.capteonline.org
CAPTE's resource documents address is www.capteonline.org/resources

This publication is available online only. To download, view, and print the report as a PDF file, go to CAPTE's resource documents address shown above.

CONTENT CONTACT
TEJ CHANA—SENIOR DATABASE SPECIALIST
accreditation@apta.org

Glossary

Faculty: All faculty, including core and associated.

Associated Faculty: Those individuals who have classroom and/or laboratory teaching responsibilities in the curriculum but are not core or clinical education faculty. Associated faculty may include individuals who have full-time appointments in the unit in which the professional program resides, but have primary responsibilities in other programs.

Core Faculty: Individuals appointed to and employed primarily in the program. Members of the core faculty typically have full-time appointments, although some part-time faculty members may be included. Core faculty generally are the group with responsibility and authority for the curriculum. The category includes program directors and directors of clinical education (DCEs). It does not include associated faculty.

Other Faculty: Core faculty excluding program directors and clinical education coordinators (DCEs & ACCEs).

Table of Contents

Glossary.....	2
THE AVERAGE PHYSICAL THERAPIST PROGRAM.....	3
PROGRAM DATA	5
Numbers	5
Distribution	6
Financing	8
Measures of Length	8
Credits Required	9
Clinical Education.....	10
Outcomes.....	11
STUDENT DATA	12
Admissions	12
Enrollment.....	14
Graduates.....	15
FACULTY DATA	16
Number	16
Ratios	16
Workload.....	16
Scholarship & Grants.....	17
Clinical Specialists	17
Faculty Demographics.....	18
Degrees Held, Rank, Tenure Status.....	18
Salaries	21

THE AVERAGE PHYSICAL THERAPIST PROGRAM

	2016-2017		2017-2018		2018-2019	
Type of Institution (% of Total Programs)	Private (50.9%)		Private (51.8%)		Private (52.2%)	
Geographic Location (% of Total Programs)	South Atlantic (20%)		South Atlantic (21%)		South Atlantic (20%)	
Top 3 States (States with Highest % of Total Programs)	(NY, PA, CA-TX same total)		(NY, PA, CA-TX same total)		(NY, PA, CA-TX same total)	
Costs (Mean)	Public	Private	Public	Private	Public	Private
Annual Tuition	17,175	35,199	17,742	35,534	18,390	37,014
Annual Fees	2,490	1,575	2,340	1,951	2,507	4,379
Total Cost of Professional Program *Room & Board Excluded	59,210	105,857	60,627	109,099	65,170	112,714
Admissions (Mean)	2016		2017		2018	
Planned Class Size	45		45		45	
Total Applicants	500		502		499	
Applicants Qualified	336		330		312	
Applicants Offered Place	87		86		91	
Applicants Enrolled	44		46		45	
GPA of Enrollees	3.6		3.6		3.6	
Enrollment (Mean)						
Total Students Enrolled	133		136		136	
Percent Women Enrolled	62%		62%		62%	
Percent Minority Enrolled	22.9%		23.9%		25.4%	
Outcomes (US Programs)						
Graduation Rate (Mean)	97.2%('16)		93.88%('1)		93.66%***('18)	
Percent Graduates Minority (Mean)	20.9%		21.2%		21.8%	
Licensure Pass Rate, First-Time Takers (Mean)	91%('15)		92.59('16)		92.39('17)	
Licensure Pass Rate, Ultimate (Mean)	98.2%		98.3%		98.59%	
Employment Rate, Post-12 Months Graduation (Mean)	99%		99%		99%	
Length of Program (Professional Phase)						
Curricular Format (% of Total Programs)	4+3 (65.3%)		4+3 (64.3%)		4+3 (65.7%)	
Weeks in Class (Didactic/Laboratory) (Mean)	95		88.2		86.1	
Weeks in Class (Full-Time Clinical Education) (Mean)	36		35.7		36	
Total Weeks in Program (Mean)	123.4		123.3		123	
Curriculum (Mean)						
Academic Calendar	Semesters (86%)		Semesters (86.7%)		Semester (87.6%)	

2018–19 Fact Sheets
Physical Therapist Education Programs

	2016-2017			2017-2018			2018-2019		
Curricular Model	Hybrid (75%)			Hybrid (76%)			Hybrid (73.3%)		
Total Semester Credits Required to Complete	120			115			120.1		
Semester Credits in Professional Phase	95			95			94.8		
Semester Credits in Prerequisite Phase	120			119			119.9		
Clinical Education (Mean)									
Clinical Education Sites	581			579			537		
Credentialed Clinical Instructors	53			53			53		
Certified Clinical Instructors	27			29			30		
Faculty (Mean)									
Full-Time Core Faculty Positions Per Program	11			11			11		
Part-Time Core Faculty Positions	1			1			1		
Associated Faculty Positions Per Program	7.9			8			8		
Core Faculty to Student Ratio	1:12			1:12			1:12		
Faculty to Student Ratio (Lab)	1:13			1:13			1:14		
Full-Time Core Faculty Characteristics (Mean)									
	Director	DCE	Faculty**	Director*	DCE	Faculty**	Director*	DCE	Faculty**
Age	65	55	40	55	50.5	53.2	55.6	54	50.6
Total Years as Faculty Member	20.6	10.8	12.5	20.6	10.5	12.4	21	11	13
Years as Faculty Member (Current Program)	13.8	9.1	9.6	13.5	9	9.5	14	9	10
Full-Time Core Faculty Workload (%)									
Workload Allotted to Teaching in Entry Level	26.6	37.1	51.4	26.25	37.6	50.6	26.37	38.55	50.7
Workload Allotted to Service	10.4	10.1	11.3	10.1	10.2	11.4	10.2	10.2	11.7
Workload Allotted to Clinical Practice	2.4	4.3	6.5	2.6	4.6	6.7	2.6	4.1	6
Workload Allotted to Scholarship	14.8	10.4	21.1	14.5	10.33	21.1	14.6	10.6	21.4

- Not available.

* Director refers to Program Director.

** Faculty refers to Other Core Faculty, excluding program director and DCE/ACCE.

***Graduation Rate: A new method of collecting and formula for calculating graduation rates was piloted on the 2018 annual accreditation report.

PROGRAM DATA

Numbers of Programs

Figure 1 Number of Accredited and Developing (Candidacy) PT Programs 2013-2018

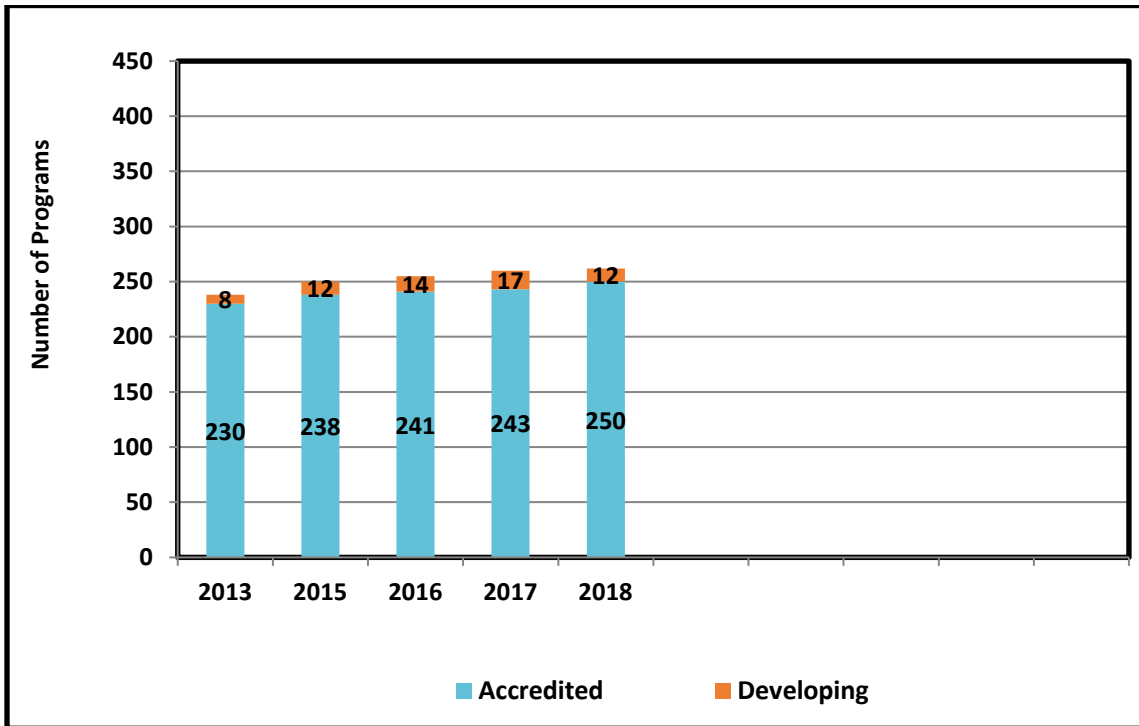
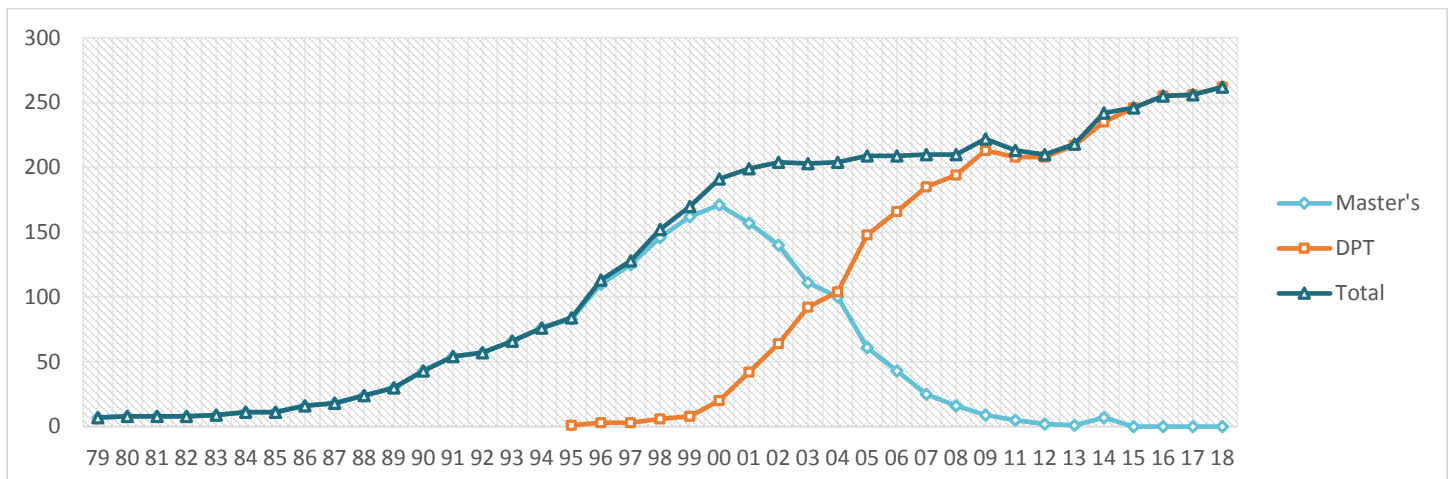


Figure 2 Number of Accredited Programs by Degree Offered 1979–2019



Distribution of Programs

Table 1 Distribution of Accredited and Developing Programs by Geographical Region 2013–19 [as of 3/2019]

	States	2013	2015	2016	2017	2018	2019
South Atlantic	DE, DC, FL, GA, MD, NC, PR, SC, VA, WV	44	47	53	54	54	57
Middle Atlantic	NJ, NY, PA	41	44	46	46	47	46
East North Central	IL, IN, MI, OH, WI	32	34	37	37	37	37
West North Central	IA, KS, MN, MO, NE, ND, SD	22	25	26	26	26	26
West South Central	AR, LA, OK, TX	20	23	25	25	26	25
New England	CT, ME, MA, NH, RI, VT	17	17	17	18	18	18
Pacific	AK, CA, HI, OR, WA	18	22	22	22	22	24
East South Central	AL, KY, MS, TN	14	12	15	15	15	14
Mountain	AZ, CO, ID, MT, NV, NM, UT, WY	9	15	14	14	14	14
Other	Canada, Scotland	3	3	1	1	1	1
Total		220	242	256	258	260	262

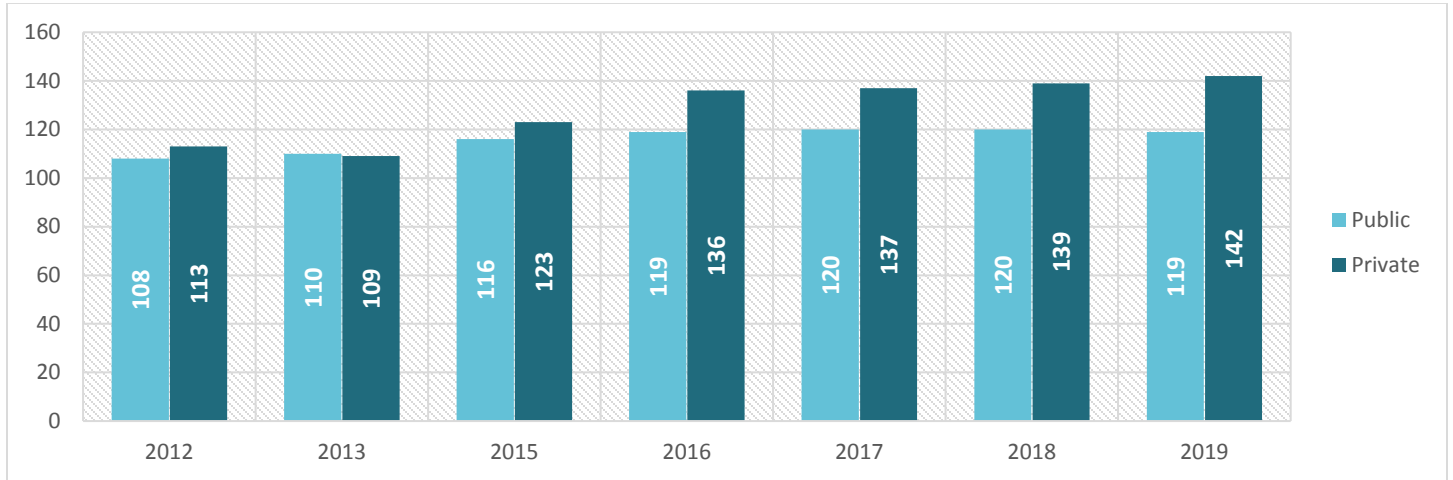
Table 2 Distribution of Accredited and Developing Programs in the US by Regional Accreditor 2013–19

	2013	2015	2016	2017	2018	2019
North Central	70	75	79	79	79	79
Southern	54	64	73	73	74	74
Middle States	48	50	52	53	53	57
New England	18	18	18	19	19	18
Western	15	22	23	23	24	24
Northwest	9	10	10	10	10	10
Total	217	239	255	257	259	261

Table 3 Distribution of Accredited and Developing Programs in the US by Carnegie Classification 2013–19 [as of 3/2019]

2006 Classification	2013	2015	2016	2017	2018	2019
Doctoral/Research Universities	23	17	18	18	19	19
Research Universities (very high research activity)	33	39	39	39	39	39
Research Universities (high research activity)	27	35	35	35	35	35
Master's Colleges and Universities (larger programs)	57	71	74	76	77	77
Master's Colleges and Universities (medium programs)	19	15	17	17	17	17
Master's Colleges and Universities (smaller programs)	11	12	13	13	13	13
Baccalaureate Colleges—Arts & Sciences	1	1	2	2	2	2
Baccalaureate Colleges—Diverse Fields	3	5	9	9	9	10
Special Focus Institutions—Medical Schools and Medical Centers	32	30	31	31	31	31
Special Focus Institutions—Other Health Professions Schools	4	12	14	12	14	16
Not Classified	6	2	2	3	3	2
Total	216	239	255	256	259	261

Figure 3 **Distribution of Accredited and Developing Programs in the US by Type of Institution 2012–19**



Financing of Professional Education

Table 4 Average Annual Tuition, Fees, and Other Costs by Type of Institution FY 2018–19 (\$)

		Public In-State*	Public Out-of-State*	Private
Annual Tuition	Range	\$7,047-\$37,944	\$11,472-\$59,249	\$8,000-\$95,844
	Median	\$18,585	\$34,727	\$35,713
	Mean	\$18,642	\$34,710	\$37,080
	STDEV	\$6,864	\$9,528	\$9,915
Annual Fees	Range	\$0-\$11,465	--	\$0-\$7,009
	Median	\$2,025	--	\$1,087
	Mean	\$2,536	--	\$1,650
	STDEV	\$2,086	--	\$1,673
Other Program Expenses	Range	\$0-\$37,665	--	\$0-\$42,000
	Median	\$4,081	--	\$3,616
	Mean	\$5,068	--	\$4,333
	STDEV	\$4,855	--	\$4,660
Total Cost of Professional Program	Range	\$27,350-\$119,142	\$31,460-\$196,709	\$49,300-\$174,551
	Median	\$62,196	\$111,275	\$107,583
	Mean	\$64,993	\$111,577	\$112,714
	STDEV	\$21,206	\$29,794	\$22,992

*1 program has historically reported a \$0 cost and has been removed from the analysis as of 2018.

Measures of Program Length

Table 5 Academic Calendar 2018–19 (%)

	% of programs
Semesters	87.64%
Trimesters	7.56 %
Quarters	4.8 %

Table 6 Average Length of Professional Curriculum (in weeks) 2011–18

		2011-12	2012-13	2014-15	2015-16	2016-17	2017-18	2018-19
Number of Weeks in Didactic Portion	Range	48–122	34–161	48–157	48–135	48-157	49.5-157	49.5-157
	Mean	85.4	93.2	87.4	86.4	87.76	88.2	88.2
Number of Weeks in Full-Time Clinical Education	Range	23–60	23–68	21–58	23–58	23-56	20-56.6	23-56.6
	Mean	35.9	35.6	35.6	36.01	37.8	35.7	36
Total Number of Weeks in Program	Range	86–164	75–180	84–180	84–175	84-180	84-180	82-180
	Mean	122	122.5	122.8	122.4	123.4	123.3	123

Table 7 Average Length of Professional Program

Length in Weeks		
Number of Weeks in Didactic Portion	Range	49.5-157
	Mean	88.2
	STDEV	15.4
Number of Weeks in Full-Time Clinical Education	Range	23-56.6
	Mean	36
	STDEV	5.1
Total Number of Weeks in Program	Range	82-180
	Mean	123
	STDEV	14

Credits Required

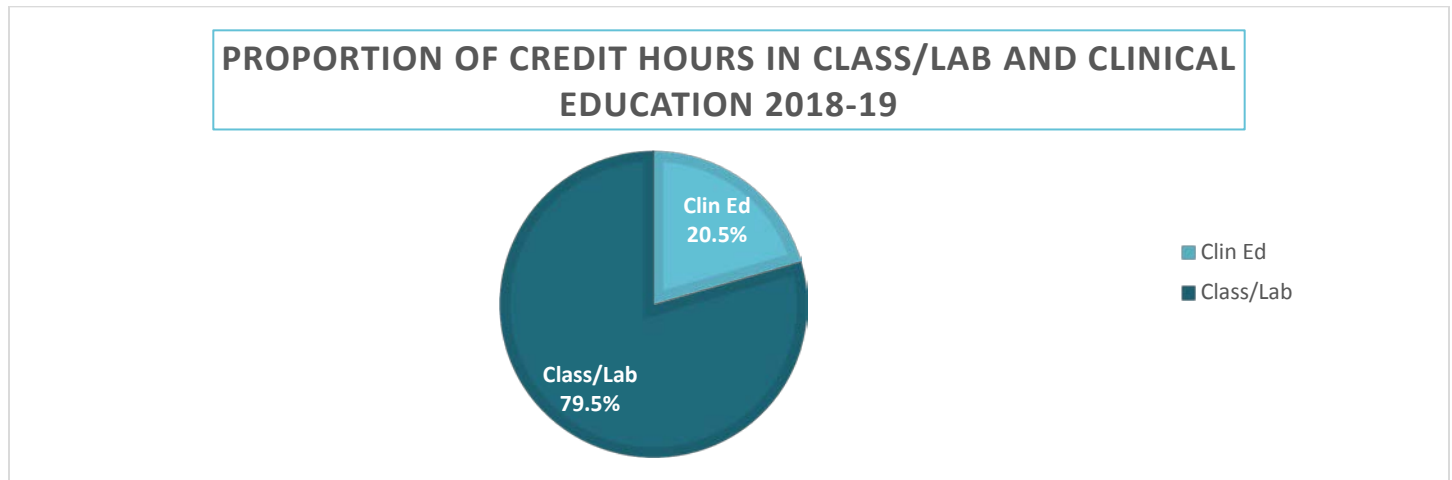
Table 8 Average Pre-Professional and Professional Semester Credits Required for Accredited Programs in the US 2014–19

		2014–15	2015–16	2016-17	2017–18	2018–19
Pre-Professional	Range	80–130	68-180	80-480	80–480	41-241
	Median	120	120	120	120	120
	Mean	116	118	120	114.05	119.59
	STDEV	11	16	29	38.40	28.72
Professional*	Range	90–171	55-165	23-165	--	64-165
	Median	117	100	93	--	94
	Mean	118	102	95	--	95.12
	STDEV	14.6	22	15	--	13.24
Clinical Education	Range	2–47	2-51	2-93	2–90	2-90
	Median	22	25	22	22	22
	Mean	24	25	25	24.79	25.14
	STDEV	9	12	11	10.07	10.78

- Not available.

* Professional excluding clinical education.

Figure 4 Credit Hours in Classroom/Laboratory and Clinical Education



Clinical Education

Table 9 Average Length of Final Clinical Education Experience 2014–18

		2014	2015	2016	2017	2018
Number of weeks in final clinical experience	Range	5–52	5–52	6–50	20–56	4–50
	Mean	21	23	21	36	21.7

Outcomes

Table 10 Sum of All Degrees Conferred 2008–18

	2008	2009	2010	2011	2012	2014	2015	2016	2017	2018
Total	5,809	6,373	6,458	7,423	7,998	8,806	9,389	9,743	10,292	10,585

Table 11 Graduation Rates 2010–18 (%)

	2010*	2011*	2012*	2013*	2014*	2016*	2017*	2018**
Range	43–100	47–100	70–100	60–100	78–100	65–100	56.2–100	53.3–100
Mean	89.17	90.1	96.1	91.9	95.9	96.7	96	93.7
Median	97.8	91.6	99	94	94	97	97.2	95.2
STDEV	8.7	7.8	10.6	7.7	4.7	5.4	5	6.4

*Rate based on the percentage of students admitted to the professional program who complete the program within 150% of the time normally expected for completion.

**A new method of collecting and calculating the graduation rate was piloted on the 2018 AAR.

Table 12 Employment Rates at 12 Months Post-Graduation 2005–18 (%)

	2008*	2010*	2011*	2012*	2014*	2015*	2016	2017	2018
Range	83–100	85–100	83–100	83–100	92–100	90–100	91–100	90–100	87–100
Mean	99.5	99.6	99.5	99.5	99	99.1	99.4	99	99.6

* To the best of the program's ability to determine, percent of graduates employed within 6 months of passing the licensure exam.

Table 13 Pass Rates of First-Time Takers on Licensure Exam 2007–18(%)

	2007*** *	2008§	2009§	2011§	2012§	2014§	2015**	2017	2018
Range	33–100	25–100	38–100	0–100	47–100	0–100	25–100	48–100	50–100
Mean	86.2	83.9	86.5	88.2	87.7	91	91	92.8	92.4
Median	90.9	87	90	92.5	90.9	94	93.6	94.89	95.0
STDEV	13.8	13.9	12.2	13.9	11.71	10	10.6	8	8.9

NOTE: Based on data provided by FSBPT: *** on 4/18/2007; § on 4/11/2012 for data current as of March 31, 2012; on April 17, 2013; on April 2, 2015; on April 13, 2016, December 2, 2016, December 2017, December 2018.

Table 14 Number of Programs by Pass Rate of First-Time Takers 2007–18

	2007*	2008§	2009§	2011§	2012§	2014§	2015§	2016§	2017§	2018§
0-9%							2			
10-19%										
20-29%		1		1				1		
30-39%	1	3	1	1			1			
40-49%	3			1	1				1	
50-59%	3	7	5	4	8	6	4	5	1	5
60-69%	20	15	15	3	10	6	6	7	2	2
70-79%	24	31	24	27	22	15	16	15	12	11
80-89%	37	53	49	40	45	41	39	48	44	40
90-99%	69	57	77	84	96	112	113	108	116	132
100%	32	20	21	36	27	36	35	43	52	49
N=	189	187	191	197	209	216	218	227	228	239

NOTE: Based on data provided by FSBPT: * on 4/11/2008; § on 4/11/2012 for data current as of March 31, 2012; on April 17, 2013; on April 2, 2015; on April 13, 2016; on December 2, 2016, December 2017, December 2018.

STUDENT DATA

Admissions

Table 15 Average Trends in Admissions 2011–18

		2011	*2012	2014	2015	2016	2017	2018
Planned Class Size	Range	14–360	10–95	12–117	12-100	6-109	12-100	6-100
	Mean	43.9	42	44	50	45	45	45
Applicants	Range	34–1,358	14–1,662	17–1,870	17–1,500	12–1,512	32-2,077	40-1,805
	Mean	357	428	471	516	500	502	501
Qualified Applicants	Range	26–982	14–1,193	14–1,398	3–1,271	6–1,283	19-1,423	23-1,525
	Mean	234.5	284	289	328	336	330	312
Applicants Offered Place in Class	Range	14–456	14–406	14–370	3-279	5-404	2-366	8-465
	Mean	85.9	86	87	92	87	86	91
Applicants Enrolled	Range	6–354	10–96	8–117	3-102	3-96	10-101	4-104
	Mean	43.2	42	44	49.4	44	46	45
Minority Students Enrolled	Range	0–104	0–36	1–50	1-54	0-49	0-47	0-54
	Mean	7.2	7	10	18	9	11	11
GPA of Students Enrolled	Range	3.1–3.9	3.1–3.9	3.05–3.77	3.13–4.0	3.09-3.89	3.10-3.88	3.2-3.88
	Mean	3.5	3.5	3.5	3.5	3.6	3.58	3.59

*Starting in 2012, expansion programs are required to report admission data separate from parent program.

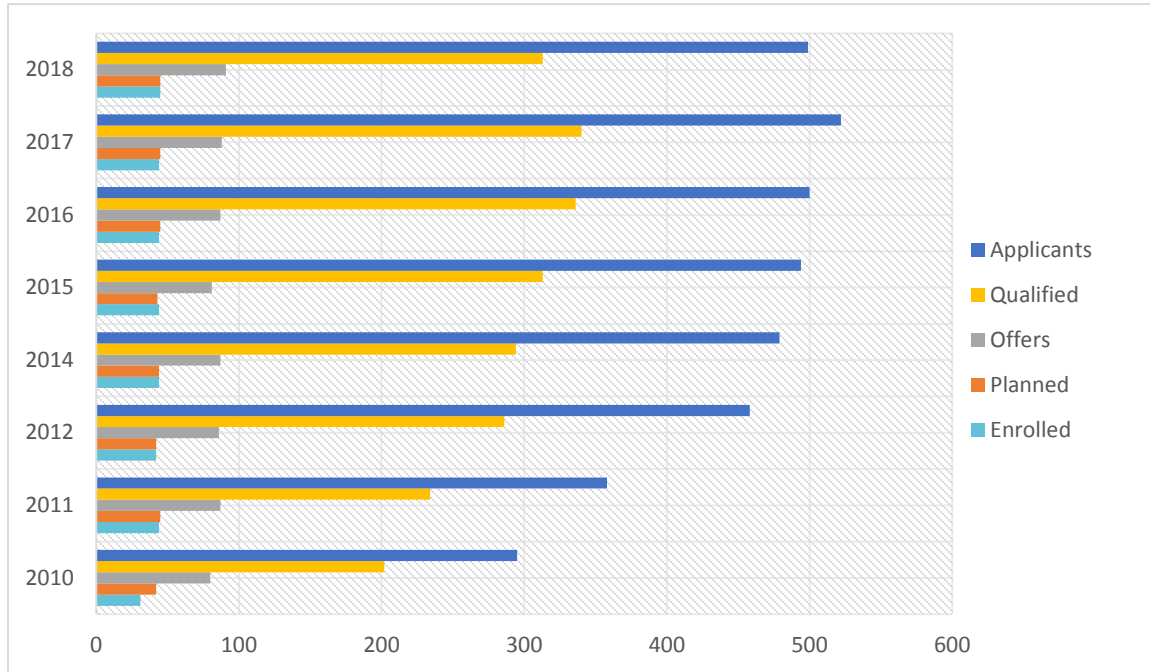
Table 16 Average Trends in Admissions by Public and Private Institution 2010–18

		Public							
		2010	2011	*2012	*2014	*2015	2016	2017	2018
Planned Class Size	Range	16–100	14–102	14–87	12–91	12–89	14–97	12–70	12–72
	Mean	42.9	39	39	41	44	36	42	41
Applicants	Range	36–748	81–1,354	58–1,662	24–1,447	26–1,459	21–404	44–2,077	46–1,805
	Mean	287.3	321	400	472	484.8	148	537	512
Qualified Applicants	Range	33–748	37–982	30–1,193	16–1,398	3–1,097	4–297	27–1,423	23–1,242
	Mean	192.6	212	267	312	323.6	107	368	344
Applicants Offered Place in Class	Range	20–247	14–202	14–187	16–370	18–279	16–150	21–193	18–252
	Mean	79.8	71	71	79	80	53	80	83
Applicants Enrolled	Range	17–100	14–102	14–87	8–91	12–89	8–97	12–71	12–72
	Mean	42.8	39	40	41	43	35	42	42
Minority Students Enrolled	Range	0–28	0–35	0–29	0–40	0–36	0–38	0–37	0–54
	Mean	6	6	6	7	12	5	10	11
GPA of Students Enrolled	Range	3.1–3.8	3.2–3.8	3.3–3.9	3.3–3.9	3.3–3.9	2.9–3.8	3.10–3.88	3.22–3.88
	Mean	3.5	3.6	3.6	3.57	3.6	3.49	3.66	3.67

		Private							
		2010	2011	*2012	*2014	*2015	2016	2017	2018
Planned Class Size	Range	14–110	20–360	10–95	14–117	17–100	10–210	12–100	6–100
	Mean	41.1	50	45	47	53	43	48	48
Applicants	Range	39–892	34– 1,358	14–1,684	17–1,870	17–1,500	13–603	32–1,400	28–1,665
	Mean	300.5	402	517	487	497.7	140	474	489
Qualified Applicants	Range	30–781	26–980	14–1,184	14–992	11–1,271	3–492	19–1,294	26–1,525
	Mean	77	102	101	95	318.5	62	299	288
Applicants Offered Place in Class	Range	14–213	14–456	16–106	14–736	12–253	3–244	2–366	8–465
	Mean	77	102	101	95	91	62	91	98
Applicants Enrolled	Range	12–89	6–354	10–96	12–117	10–102	3–178	10–101	4–104
	Mean	39.4	48	45	47	51	35	49	48
Minority Students Enrolled	Range	0–36	0–104	0–36	1–50	1–54	0–47	0–47	0–52
	Mean	6.5	8	8	10	17.5	7	12	11
GPA of Students Enrolled	Range	3.0–3.9	3.1–3.9	3.1–3.8	3.1–3.8	3.1–4.0	2.9–3.8	3.13–3.80	3.2–3.88
	Mean	3.5	3.47	3.47	3.5	3.5	3.37	3.51	3.52

*Starting in 2012, expansion programs are required to report admission data separate from parent program.

Figure 5 Trends in Admission for DPT Programs 2010–18



Enrollment

Table 17 Percentage of Students Enrolled in Programs, by Race/Ethnicity (%)

	* 2010– 11 N=22,332	2011– 12 N=24,848	2012– 13 N=25,945	2014– 15 N=28,514	2015– 16 N=31,426	2016– 17 N=31,380	2017– 18 N=32,417	2018– 19 N=34,218
African American	3.5	3.4	3.3	3.1	3	3.03	3.26	3.39
American Indian/Alaskan Native	0.4	0.4	0.4	0.4	0.41	0.52	0.43	0.39
Asian	6.2	5.9	6.2	6.7	6.84	7.36	8.21	8.91
Caucasian	81.7	81.3	80.6	79	77.5	77.10	75.9	74.57
Hispanic/Latino	3.9	4	3.99	4.7	4.4	5.75	6.29	6.53
Native Hawaiian/Other Pacific Islander	#	0.5	0.4	0.5	0.39	0.38	0.32	0.28
Two or More Races	#	0.8	1	1.3	-2.1	-2.7	-2.42	-3
Unknown	3.4	3.7	4.1	4.3	4.1	3.16	3.07	3

- Not available.

Rounds to zero.

*In 2010 the categories changed due to change in IPED definitions.

Graduates

Table 18 Ethnicity of Graduates of Physical Therapist Programs

	2018
	N=10,705
African American	3.30%
American Indian/Alaskan Native	0.38%
Asian	7.48%
Hawaiian Native/Pacific Islander	0.28%
Hispanic/Latino	5.50%
White	78.24%
Other	2.35%
Unknown	2.77%

Table 19 Enrollment by Sex

		Female			Male			Other/No Answer*			Total		
		2016	2017	2018	2016	2017	2018	2016	2017	2018	2016	2017	2018
Number of Students in All Programs		19,501	20,393	21,131	11,879	12,437	13,074	-	10	13	31,380	32,417	34,218
Number of Students Per Program	Mean Range	82.63 11-248	84.62 6-259	84 4-246	50.33 4-215	51.61 2-247	52 1-253	-	0.04 0 - 2	.05 0-2	132.97 15-405	136.27 8-438	136.33 5-464

- Option added as of 2017 AAR for Student and Faculty Gender 'Other/Choose Not To Answer'

FACULTY DATA

Number of Faculty

Table 20 Number of Core and Associated Faculty 2018

Totals (Core)	
Total Number of Full-Time Core Faculty Positions	2,733
Total Number of Part-Time Core Faculty Positions	191
Mean (Core)	
Full-Time Core Faculty Positions	10.9
Part-Time Core Faculty Positions	0.8
Core Faculty Full-Time Equivalent (FTE)	13.17
Mean (Associated)	
Total Number of Adjunct/Associated Faculty	2,021
Number of Associated Faculty	8
Total FTE of Associated Faculty	1.75

Table 21 Average Number of Core Faculty Vacancies 2018

Totals	
Total Current Vacancies in Allocated Positions	173
Total Projected Vacancies in Allocated Positions	116
Total Number of New Positions to be Filled	33

Ratios

Table 22 Ratio of Students per Core Faculty and Laboratory Faculty Member 2018

Number of Students Per Core Faculty Member	12.13
Number of Students Per Faculty Member in Laboratory Experiences	13.62

Workload

Table 23 Percentage of Faculty by Workload (%)

	% of Time Devoted to					
	Teaching Entry-level Program	Other Programs	Scholarship	Administration	Service	Clinical Practice
Program Director (236)	26.30	1.93	14.67	44.43	10.02	2.59
DCE (314)	38.59	0.73	10.62	35.32	10.19	4.13
Other Faculty (2180)	50.79	3.03	21.31	6.66	11.64	6.04

Scholarship & Grants

Table 24 Scholarship Productivity of Core Faculty 2018

Total Number of Peer-Reviewed Articles	3,282
Total Number of Other Articles	619
Total Number of Books or Book Chapters	402
Total Number of Presentations	6,97
Total Number of Other Scholarly Products subjected to external review and disseminated	469
Total Number of Papers, Proposals, etc, submitted but not yet accepted or published	2,385
Mean (per Program)	
Peer-Reviewed Articles (excluding Abstracts)	13
Other Articles Accepted or Published	2
Books or Book Chapters Published	2
Presentations	26
Other Scholarly Products subjected to external review and disseminated	2
Papers, Proposals, etc, submitted but not yet accepted or published	10

Table 25 Grants and Grant Funding FY 2018–19

Total for All Programs		
Total Number of Core Faculty with Grant Funding		879
Total Amount of Grant Funding		\$578,566,218
Total Amount of Above Funding from National Institutes of Health (NIH)		\$360,306,933
Total Number of Core Faculty who submitted proposals for funding, are not funded, or are not yet funded		1,070
Per Program		
Number of Core Faculty with Grant Funding (per program)	Range	0-31
	Mean	4
Amount of Grant Funding (per program)	Range	\$0-\$59,497,542
	Mean	\$2,305,045
Amount of Funding from NIH (per program)	Range	\$0-\$40,986,299
	Mean	\$1,435,486
Number of Core Faculty who submitted proposals for funding that were not funded or are not yet funded (per program)	Range	0-54
	Mean	4

Clinical Specialists

Table 26 Number of Core Faculty who are Certified Clinical Specialists 2009–19

	2009–10	2010–11	2011–12	2012–13	2014–15	2015–16	2016–17	2017-18	2018- 19 (2730)
Total	754	746	828	891	1,103	1,196	1,268	1,327	1,287
%	34.3	35.1	37.6	37.4	39.9	41.9	43.7	45.7	47.1

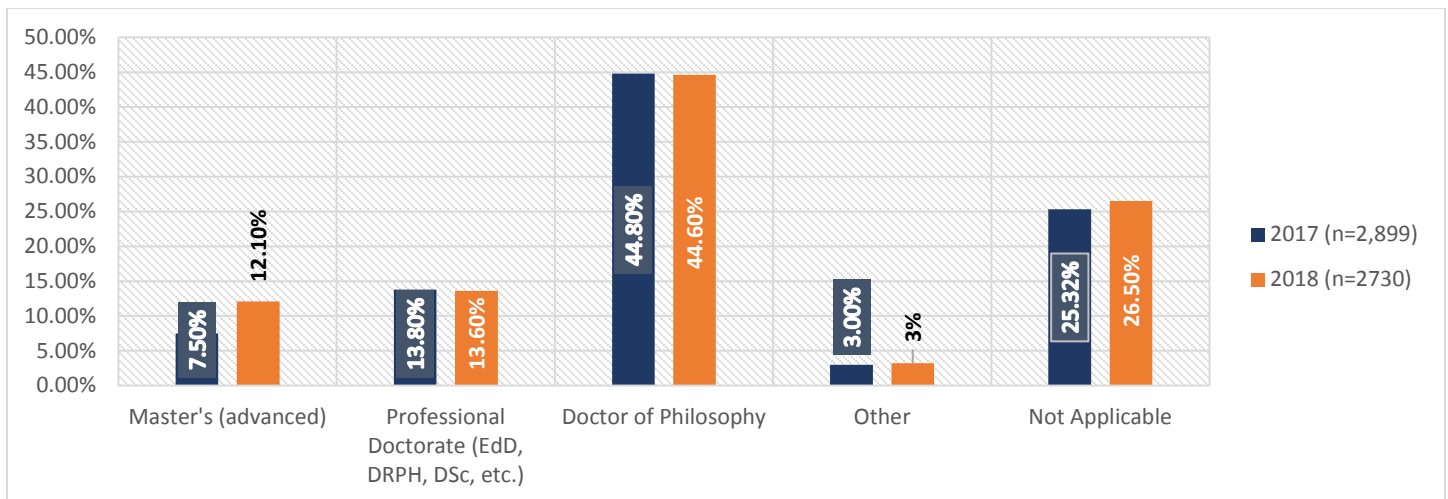
Faculty Demographics

Table 27 Number of Faculty by Race/Ethnicity 2018

	Program Director	DCE	Other Faculty	All Core Faculty	Associated
Black or African American	7	12	52	73	55
American Indian/Alaskan Native	0	2	3	5	2
Asian	6	6	146	162	101
White	216	156	1,856	2,350	1,805
Hispanic/Latino of Any Race	4	6	78	90	71
Native Hawaiian/Pacific Islander	0	1	3	4	13
Two Or More Races	3	0	25	29	17
Unknown	0	0	13	13	86
Total	236	183	2,180	2,730	2,162

Degrees Held, Rank, Tenure Status

Figure 6 Percentage of Highest Academic Degree Held by all Core Faculty 2018



*Not including DPT degree.

Figure 7 Percentage of Core Faculty Ranks 2014–18

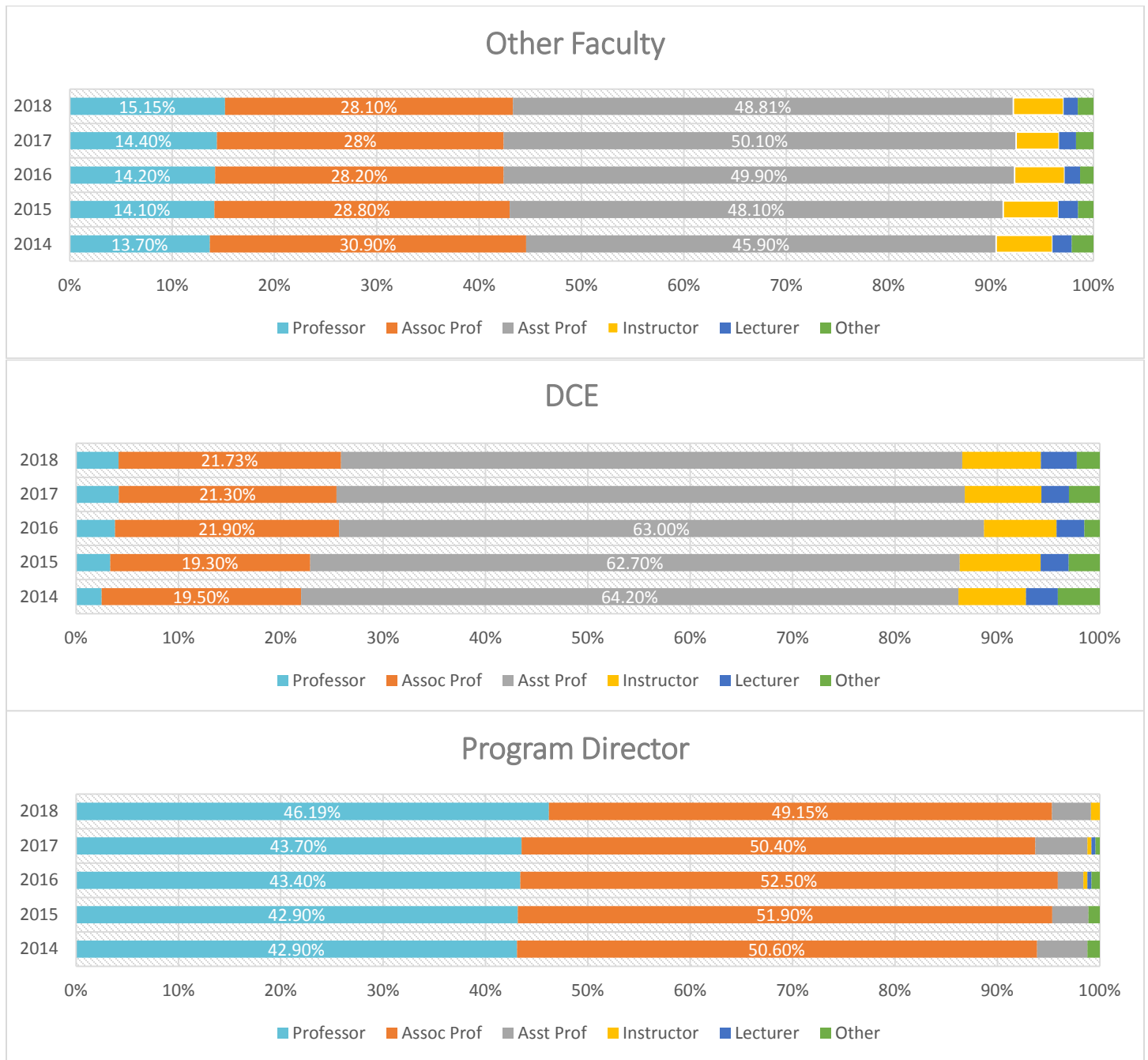


Table 28 Percentage of Core Faculty Ranks 2015–18

	Other Faculty				DCE				Program Director			
	2015	2016	2017	2018	2015	2016	2017	2018	2015	2016	2017	2018
Professor	14.1	14.2	14.4	15.1	3.3	3.8	4.2	4.1	42.9	43.4	43.7	46.2
Assoc Prof	28.8	28.2	28	28.1	19.3	21.9	21.3	21.3	51.9	52.5	50.4	49.2
Asst Prof	48.1	49.9	50.1	48.8	62.7	63.0	61.5	60.1	3.5	2.5	5.12	3.8
Instructor	5.4	4.9	4.2	4.9	7.8	7.1	7.5	7.6	#	0.4	0.4	.8
Lecturer	1.9	1.5	1.65	1.4	2.7	2.7	2.7	3.5	#	0.4	0.4	-
Other	1.5	1.3	1.7	1.5	3.0	1.5	3	2.2	1.1	0.8	0.4	-

Figure 8 Tenure Status of Core Faculty 2018

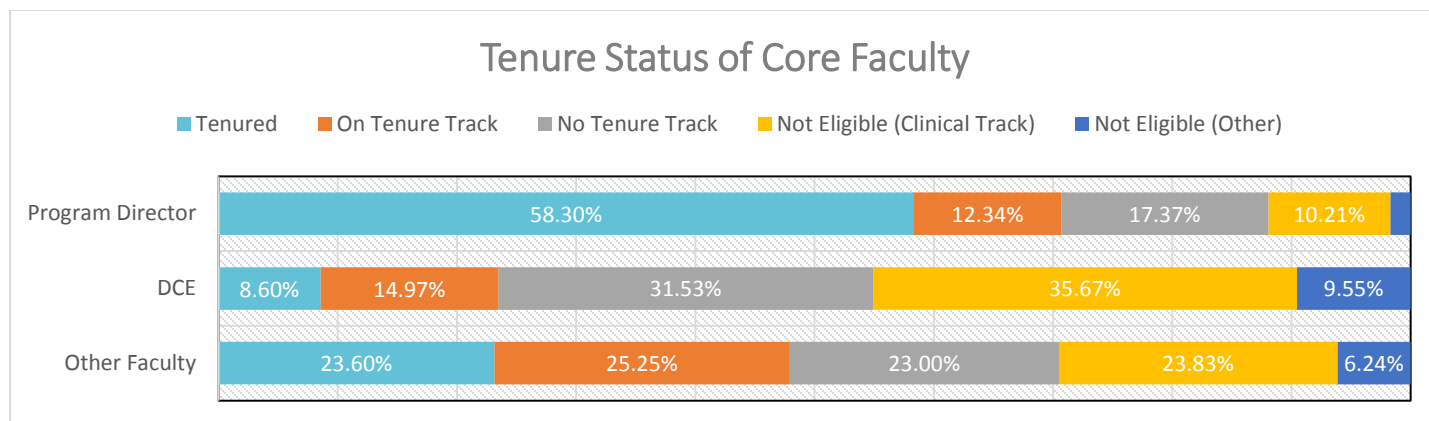


Table 29 Tenure Status of Core Faculty 2018

	Other Faculty	DCE	Program Director
Tenured	23.6%	8.60%	58.30%
On Tenure Track	25.25%	14.97%	12.34%
No Tenure Track	23.00%	31.53%	17.37%
Not Eligible (Clinical Track)	23.83%	35.67%	10.21%
Not Eligible (Other)	6.24%	9.55%	1.70%

Salaries – PT Programs

Table 1 Salaries of Program Directors (N = 150) in Physical Therapist Education Programs by Rank, Length of Appointment, and Type of Institution

Program Director						
	Public			Private		
	9-9.5	10-11	12	9-9.5	10-11	12
Lecturer						
N	-	-	-	-	-	-
Mean	-	-	-	-	-	-
Median	-	-	-	-	-	-
Range	-	-	-	-	-	-
STDEV	-	-	-	-	-	-
Instructor						
N	-	-	1	-	-	-
Mean	-	-	-	-	-	-
Median	-	-	-	-	-	-
Range	-	-	-	-	-	-
STDEV	-	-	-	-	-	-
Assistant Professor						
N	-	-	-	3	0	0
Mean	-	-	-	107,214	-	-
Median	-	-	-	106,090	-	-
Range	-	-	-	103,000-112,214	-	-
STDEV	-	-	-	3,979	-	-
Associate Professor						
N	3	2	25	1	3	40
Mean	94,174	-	126,079	-	106,038	138,144
Median	90,662	-	125,278	-	113,904	129,589
Range	85,161-106,700	-	93,382-163,299	-	82,749-121,460	87,000-284,500
STDEV	9,137	-	20,138	-	16,754	37,037
Professor						
N	4	2	37	2	3	24
Mean	112,615	-	145,279	-	144,324	153,091
Median	112,010	-	145,000	-	141,562	138,590
Range	109,821-116,620	-	88,748-228,678	-	116,213-175,197	98,059-294,158
STDEV	2,552	-	22,423	-	24,159	42,310
Other						
N	-	-	-	-	-	-
Mean	-	-	-	-	-	-
Median	-	-	-	-	-	-
Range	-	-	-	-	-	-
STDEV	-	-	-	-	-	-

Salaries – PT Programs

Table 32 Salaries of DCE (N = 192) in Physical Therapist Education Programs by Rank, Length of Appointment, and Type of Institution

DCE						
	Public			Private		
	9-9.5	10-11	12	9-9.5	10-11	12
Lecturer						
N	-	1	2	-		-
Mean	-			-		-
Median	-			-		-
Range	-			-		-
STDEV	-			-		-
Instructor						
N	1	-	5			5
Mean		-	86,866			103,533
Median		-	80,069			99,000
Range		-	72,800-102,792			96,297-121,820
STDEV		-	13,008			9,487
Assistant Professor						
N	2		51	2	9	56
Mean			90,772	-	81,060	93,992
Median			90,804	-	75,908	91,322
Range			69,970-115,008	-	70,000-111,317	72,140-128,640
STDEV			8,932	-	12,232	13,874
Associate Professor						
N	1	3	16	1	4	22
Mean	-	83,983	101,690		83,574	98,207
Median	-	81,983	103,997		79,610	99,982
Range	-	70,000-97,055	76,956-127,945		69,276-105,799	61,812-125,000
STDEV	-	11,069	17,506		13,955	15,063
Professor						
N	-	-	5	1	-	2
Mean	-	-	110,609		-	
Median	-	-	111,000		-	
Range	-	-	93,374-124,005		-	
STDEV	-	-	9,893		-	
Other						
N	-	-	1	-	-	2
Mean	-	-		-	-	
Median	-	-		-	-	
Range	-	-		-	-	
STDEV	-	-		-	-	

Salaries – PT Programs

Table 33 Salaries of Other faculty (N = 1,301) in Physical Therapist Education Programs by Rank, Length of Appointment, and Type of Institution

Other Faculty

	Public			Private		
	9-9.5	10-11	12	9-9.5	10-11	12
Lecturer						
N		5	4	-	-	-
Mean		89,749	88,377	-	-	-
Median		100,108	85,755	-	-	-
Range		73,900-100,320	75,000-107,000	-	-	-
STDEV		12,856	12,241	-	-	-
Instructor						
N	2	-	23	3	3	20
Mean	-	-	85,175	81,455	65,518	81,462
Median	-	-	87,295	78,866	61,800	83,000
Range	-	-	47,100-104,929	65,000-100,500	61,315-73,440	65,000-95,670
STDEV	-	-	12,936	14,608	5,605	7,014
Assistant Professor						
N	51	39	227	42	47	255
Mean	79,828	86,891	92,308	78,497	77,515	96,824
Median	78,000	86,275	92,164	76,594	78,566	95,670
Range	62,016-101,991	70,000-137,448	56,868-143,910	57,900-114,803	46,389-100,651	68,045-160,099
STDEV	11,260	11,540	11,357	11,987	9,878	13,340
Associate Professor						
N	41	22	119	41	32	130
Mean	88,942	99,207	106,789	83,729	90,372	109,670
Median	85,690	98,596	103,243	81,446	91,115	105,840
Range	68,300-124,362	79,000-140,077	57,190-152,501	64,800-110,160	69,264-115,300	67,155-188,644
STDEV	12,634	14,302	16,632	9,531	12,280	18,764
Professor						
N	20	18	45	23		74
Mean	102,432	116,925	127,663	106,637		123,851
Median	103,081	114,986	122,212	100,633		80,000-192,579
Range	68,293-129,603	97,914-179,243	85,186-262,682	74,200-182,155		24,966
STDEV	14,476	17,615	29,563	26,317		
Other						
N	2	3	7	1	-	2
Mean		87,566	73,004		-	
Median		61,531	70,080		-	
Range		53,099-148,069	49,500-102,538		-	
STDEV		42,920	18,767		-	