

AGGREGATE PROGRAM DATA

2019 PHYSICAL THERAPIST EDUCATION PROGRAMS FACT
SHEETS

COMMISSION ON ACCREDITATION IN PHYSICAL THERAPY EDUCATION | 1111 N. FAIRFAX ST. ALEXANDRIA, VA
ACCREDITATION@APTA.ORG



2019 Fact Sheet

Physical Therapist Education Programs

This Fact Sheet is designed to provide the education community with current and historical information about physical therapist education programs, students and faculty. The data included in this Fact Sheet is taken from the following sources:

THE 2019 ANNUAL ACCREDITATION REPORT, COMPLETED DECEMBER 2019 BY US ACCREDITED PROGRAMS
THE 2018, 2017, 2016, 2015, 2013, 2012, 2011, 2010 AND 2009 ANNUAL ACCREDITATION REPORTS
THE 2002, 2004, AND 2006 BIENNIAL ACCREDITATION REPORTS
PREVIOUS SURVEYS OF THE PT EDUCATIONAL PROGRAMS CONDUCTED BY THE EDUCATION DIVISION
DEPARTMENT OF ACCREDITATION RECORDS
LICENSURE PASS RATE INFORMATION PROVIDED BY THE FSBPT ON APRIL 2005, APRIL 2006, APRIL 2007, APRIL 2011, APRIL 2012, APRIL 2014, APRIL 2015, APRIL 2016, DECEMBER 2017, DECEMBER 2018 AND DECEMBER 2019.

Unless otherwise indicated, the data reflects accredited and developing physical therapist education programs for the academic year 2019 – 20. All uses of this data should reference the Commission on Accreditation in Physical Therapy Education (CAPTE) as the source of the data and acknowledge that CAPTE bears no responsibility for interpretations presented or conclusions reached based on analysis of the data.

Symbols

Many tables in this volume use a series of symbols to alert the reader to special statistical notes. These symbols, and their meanings, are as follows:

- Not available.
- † Not applicable.
- # Rounds to zero.
- ‡ Reporting standards not met.

Originally Published March 10, 2020

(updates made after the date of original publication will be highlighted in yellow)

CAPTE's Home Page address is www.capteonline.org

CAPTE's Resource Documents address is www.capteonline.org/resources

This publication is only available online. To download, view, and print the report as a PDF file, go to CAPTE's Resource Documents address shown above.

CONTENT CONTACT

TEJ CHANA – SR. DATABASE SPECIALIST

accreditation@apta.org

Glossary

Faculty – All faculty including core and associated.

Associated Faculty – Associated faculty are those individuals who have classroom and/or laboratory teaching responsibilities in the curriculum and who are not core faculty or clinical education faculty. The associated faculty may include individuals with full-time appointments in the unit in which the professional program resides, but who have primary responsibilities in programs other than the professional program.

Core Faculty – Core faculty are those individuals appointed to and employed primarily in the program. Members of the core faculty typically have full-time appointments, although some part-time faculty members may be included among the core faculty. The core faculty are generally the group with the responsibility and the authority related to the curriculum. Includes Program Directors and DCEs; does not include associated faculty.

Other Faculty – Core faculty excluding Program Directors and Clinical Education Coordinators (DCEs & ACCEs).

Table of Contents

Glossary.....	2
THE AVERAGE PHYSICAL THERAPIST PROGRAM.....	3
PROGRAM DATA	5
Numbers of Programs	5
Distribution of Programs.....	6
Financing of Professional Education	8
Measures of Program Length.....	8
Credits Required	9
Clinical Education	10
Outcomes.....	11
STUDENT DATA	12
Admissions	12
Enrollment.....	14
Graduates.....	15
FACULTY DATA	16
Number of Faculty	16
Ratios	16
Workload.....	16
Scholarship & Grants.....	17
Clinical Specialists	17
Faculty Demographics.....	18
Degrees Held, Rank, Tenure Status.....	18

THE AVERAGE PHYSICAL THERAPIST PROGRAM

	2017-2018		2018-2019		2019-2020	
Type of Institution (% of Total Programs)	Private (51.8%)		Private (52.2%)		Private (54%)	
Geographic Location (% of Total Programs)	South Atlantic (21%)		South Atlantic (20%)		South Atlantic (20.4%)	
Top 3 States (States with Highest % of Total Programs)	(NY, PA, CA-TX same total)		(NY, PA, CA)		(NY, CA-TX same total, PA)	
Costs (Mean)	Public	Private	Public	Private	Public	Private
Annual Tuition	17,742	35,534	18,390	37,014	18,989	37,448
Annual Fees	2,340	1,951	2,507	4,379	2,819	1,598
Total Cost of Professional Program *Room & Board Excluded	60,627	109,099	65,170	112,714	66,074	113,497
Admissions (Mean)	2017		2018		2019	
Planned Class Size	45		45		45	
Total Applicants	502		499		440	
Applicants Qualified	330		312		281	
Applicants Offered Place	86		91		92	
Applicants Enrolled	46		45		45	
GPA of Enrollees	3.6		3.6		3.58	
Enrollment (Mean)						
Total Students Enrolled	136		136		137	
Percent Women Enrolled	62%		62%		61%	
Percent Minority Enrolled	23.9%		25.4%		26%	
Outcomes (US Programs)						
Graduation rate (Mean)	97.2%('16)		93.66***('18)		96.47****('19)	
Percent Graduates Minority (Mean)	20.9%		21.8%		23.3%	
Licensure Pass Rate, First Time Takers (Mean)	92.59('16)		92.39('17)		90.8 ('18)	
Licensure Pass Rate, Ultimate (Mean)	98.3%		98.59%		98.57%	
Employment Rate, Post 12 Months Graduation (Mean)	99%		99%		99%	
Length of Program (Professional Phase)						
Curricular Format (% of Total Programs)	4+3 (64.3%)		4+3 (65.7%)		4+3 (67.4%)	
Weeks in Class (Didactic/Laboratory) (Mean)	88.2		86.1		88	
Weeks in Class (Full-Time Clinical Education) (Mean)	35.7		36		35.8	
Total Weeks in Program (Mean)	123.3		123		123.8	
Curriculum (Mean)						
Academic Calendar	Semesters (86.7%)		Semester (87.6%)		Semester (86.3%)	

2019 – 2020 Fact Sheets
Physical Therapist Education Programs

	2017-2018			2018-2019			2019-2020		
Curricular Model	Hybrid (76%)			Hybrid (73.3%)			Hybrid (74.6%)		
Total Semester Credits Required to Complete	115			120.1			121		
Semester Credits in Professional Phase	95			94.8			96.5		
Semester Credits in Prerequisite Phase	119			119.9			113		
Clinical Education (Mean)									
Clinical Education Sites	579			537			610		
Credentialed Clinical Instructors	53			53			55		
Certified Clinical Instructors	29			30			32		
Faculty (Mean)									
Full-Time Core Faculty Positions Per Program	11			11			11		
Part-Time Core Faculty Positions	1			1			.7		
Associated Faculty Positions Per Program	8			8			9		
Core Faculty to Student Ratio	1:12			1:12			1:12.1		
Faculty to Student Ratio (Lab)	1:13			1:14			1:13.4		
Full-Time Core Faculty Characteristics (Mean)									
	Director	DCE	Faculty**	Director*	DCE	Faculty**	Director*	DCE	Faculty**
Age	55	50.5	53.2	55.6	54	50.6	56	49	49.8
Total Years as Faculty Member	20.6	10.5	12.4	21	11	13	20	11	13
Years as Faculty Member (Current Program)	13.5	9	9.5	14	9	10	13	9	10
Full-Time Core Faculty Workload (%)									
Workload Allotted to Teaching in Entry Level	26.25	37.6	50.6	26.37	38.55	50.7	27.2	39.2	50.8
Workload Allotted to Service	10.1	10.2	11.4	10.2	10.2	11.7	10.38	9.85	11.54
Workload Allotted to Clinical Practice	2.6	4.6	6.7	2.6	4.1	6	2.5	4.23	5.6
Workload Allotted to Scholarship	14.5	10.33	21.1	14.6	10.6	21.4	14.6	10.56	21.8

- Not available.

* Director refers to Program Director.

** Faculty refers to Other Core Faculty, excluding program director and DCE/ACCE.

***Graduation Rate – A new method of collecting and formula for calculating graduation rates was piloted on the 2018 annual accreditation report

****Graduation Rate – A new method of collecting and formula for calculating graduation rate was implemented on the 2019 annual accreditation report

PROGRAM DATA

Numbers of Programs

Figure 1 Number of Accredited and Developing (Candidacy) PT Programs

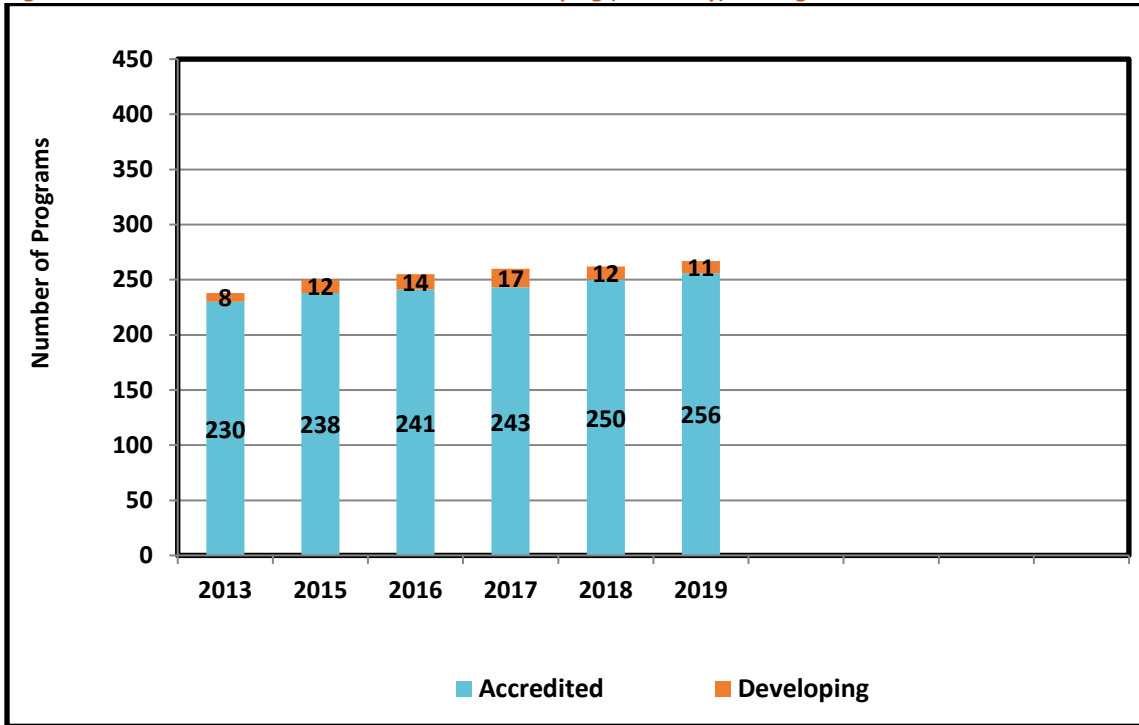
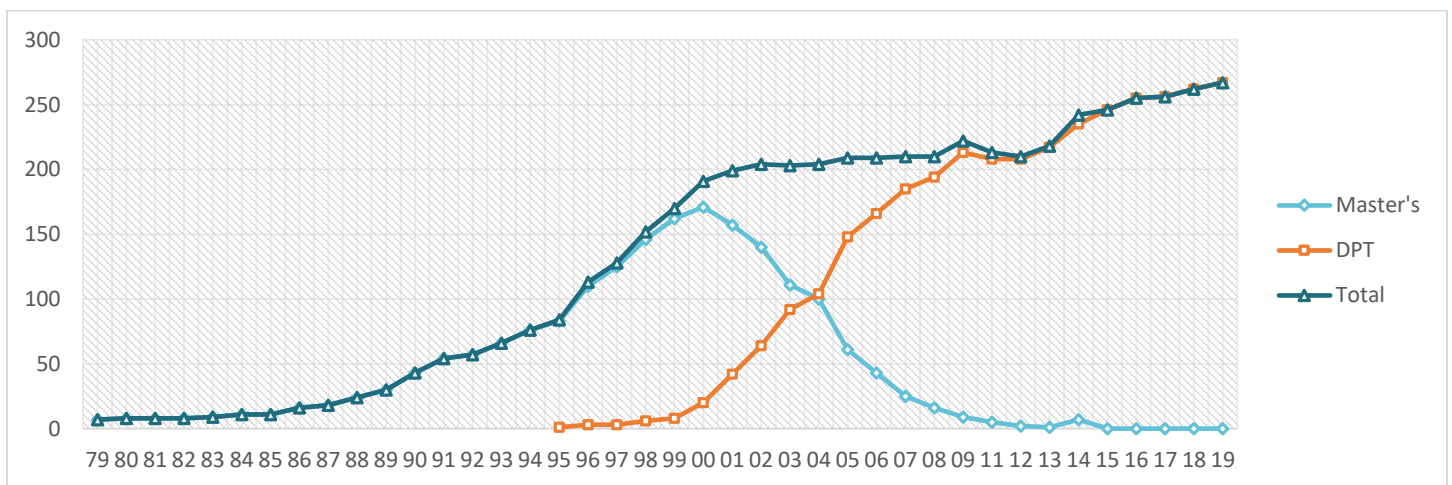


Figure 2 Number of accredited programs by degree offered 1979 – 2019



Distribution of Programs

Table 1 Distribution of accredited and developing programs by geographical region 2015 – 20 [as of 2/2020]

	States	2015	2016	2017	2018	2019	2020
South Atlantic	DE, DC, FL, GA, MD, NC, PR, SC, VA, WV	47	53	54	54	57	56
Middle Atlantic	NJ, NY, PA	44	46	46	47	46	48
East North Central	IL, IN, MI, OH, WI	34	37	37	37	37	38
West North Central	IA, KS, MN, MO, NE, ND, SD	25	26	26	26	26	26
West South Central	AR, LA, OK, TX	23	25	25	26	25	28
New England	CT, ME, MA, NH, RI, VT	17	17	18	18	18	18
Pacific	AK, CA, HI, OR, WA	22	22	22	22	24	23
East South Central	AL, KY, MS, TN	12	15	15	15	14	15
Mountain	AZ, CO, ID, MT, NV, NM, UT, WY	15	14	14	14	14	14
Other	Canada, Scotland	3	1	1	1	1	1
Total		242	256	258	260	262	267

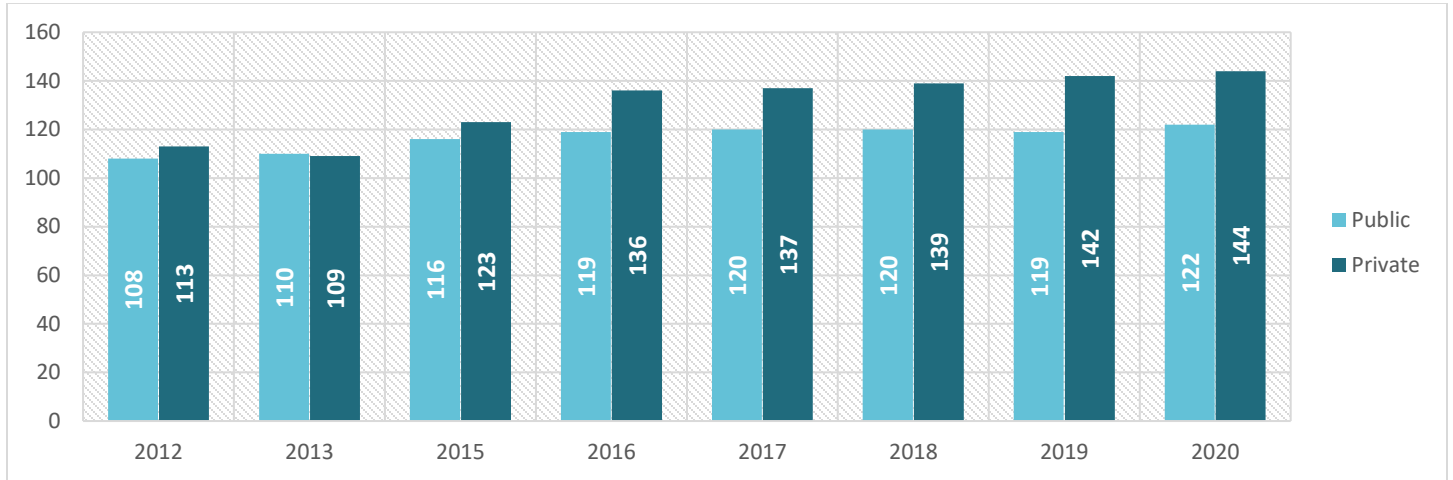
Table 2 Distribution of accredited and developing programs in the US by regional accreditor 2015 – 20

	2015	2016	2017	2018	2019	2020
North Central	75	79	79	79	79	79
Southern	64	73	73	74	74	76
Middle States	50	52	53	53	57	58
New England	18	18	19	19	18	19
Western	22	23	23	24	24	24
Northwest	10	10	10	10	10	10
Total	239	255	257	259	261	266

Table 3 Distribution of accredited and developing programs in the US by Carnegie Classification 2015 – 20 [as of 3/2019]

2006 Classification	2015	2016	2017	2018	2019	2020
Doctoral/Research Universities	17	18	18	19	19	20
Research Universities (very high research activity)	39	39	39	39	39	39
Research Universities (high research activity)	35	35	35	35	35	35
Master's Colleges and Universities (larger programs)	71	74	76	77	77	77
Master's Colleges and Universities (medium programs)	15	17	17	17	17	18
Master's Colleges and Universities (smaller programs)	12	13	13	13	13	14
Baccalaureate Colleges – Arts & Sciences	1	2	2	2	2	2
Baccalaureate Colleges –Diverse Fields	5	9	9	9	10	11
Special Focus Institutions – Medical Schools and Medical Centers	30	31	31	31	31	31
Special Focus Institutions – Other Health Professions Schools	12	14	12	14	16	16
Not Classified	2	2	3	3	2	3
Total	239	255	256	259	261	266

Figure 3 **Distribution of accredited and developing programs in the US by type of institution 2012 – 20**



Financing of Professional Education

Table 4 Average annual tuition, fees, and other costs by type of institution FY 2019 – 20 (\$)

		Public In-State*	Public Out-of-State*	Private
Annual Tuition	Range	\$4,028-\$43,185	\$10,371-\$61,026	\$21,152-\$71,220
	Median	\$18,514	\$33,879	\$36,882
	Mean	\$18,989	\$34,307	\$37,448
	STDEV	\$7,384	\$9,599	\$7,965
Annual Fees	Range	\$0-\$14,002	--	\$0-\$6,898
	Median	\$2,366	--	\$962
	Mean	\$2,819	--	\$1,598
	STDEV	\$2,367	--	\$1,659
Other Program Expenses	Range	\$0-\$25,901	--	\$0-\$19,678
	Median	\$3,956	--	\$3,434
	Mean	\$4,903	--	\$4,059
	STDEV	\$4,131	--	\$3,522
Total Cost of Professional Program	Range	\$18,234-\$120,743	\$31,460-\$209,045	\$67,198-\$179,738
	Median	\$62,661	\$111,564	\$112,536
	Mean	\$66,074	\$112,421	\$113,497
	STDEV	\$20,987	\$30,778	\$21,048

*1 Program has historically reported a \$0 cost and has been removed from the analysis as of 2018

Measures of Program Length

Table 5 Academic calendar 2019 – 20 (%)

	% of programs
Semesters	86.3%
Trimesters	8.9 %
Quarters	4.8 %

Table 6 Average length of professional curriculum (in weeks) 2012 – 19

		2012 – 13	2014 – 15	2015 – 16	2016 – 17	2017 – 18	2018 – 19	2019- 20
Number of weeks in didactic portion	Range	34 – 161	48 – 157	48 – 135	48-157	49.5-157	49.5-157	32-157
	Mean	93.2	87.4	86.4	87.76	88.2	88.2	88
Number of weeks in full-time Clinical Education	Range	23 – 68	21 – 58	23 – 58	23-56	20-56.6	23-56.6	30-56.6
	Mean	35.6	35.6	36.01	37.8	35.7	36	35.8
Total number of weeks in program	Range	75 – 180	84 – 180	84 – 175	84-180	84-180	82-180	69-180
	Mean	122.5	122.8	122.4	123.4	123.3	123	123.8

Table 7 Average length of professional program

Length in Weeks		
Number of weeks in didactic portion	Range	32-157
	Mean	88
	STDEV	15.1
Number of weeks in full-time clinical education	Range	30-56.6
	Mean	35.8
	STDEV	5
Total number of weeks in program	Range	69-180
	Mean	123.8
	STDEV	14.3

Credits Required

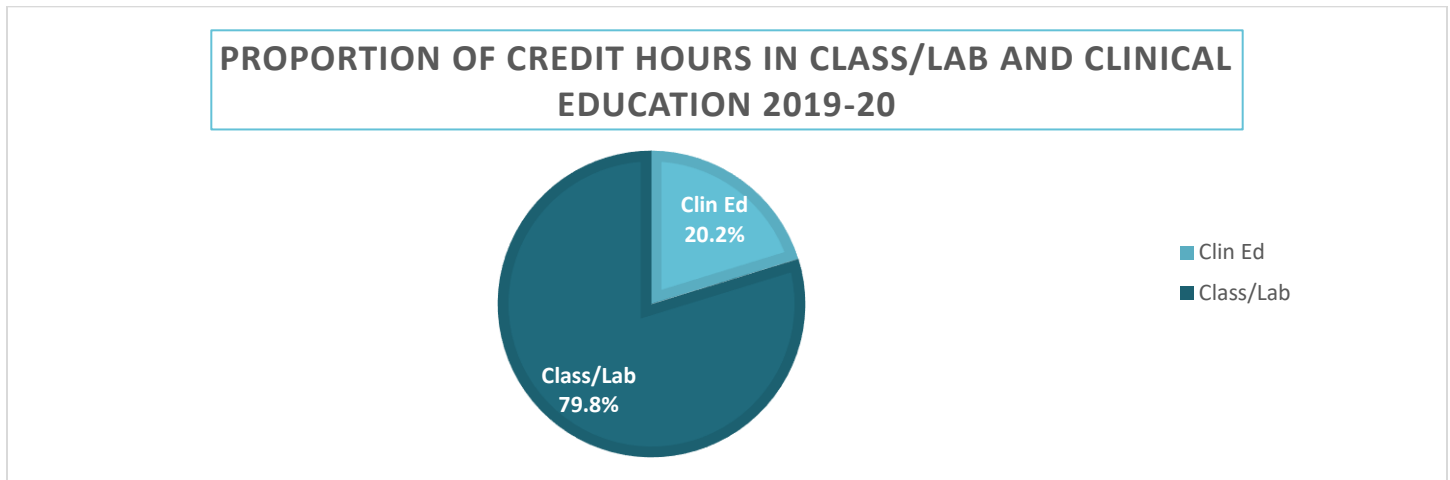
Table 8 Average pre-professional and professional* semester credits required for accredited programs in the US 2015 – 20

		2015 – 16	2016 - 17	2017 – 18	2018 – 19	2019 - 20
Pre-Professional	Range	68 - 180	80 - 480	80 – 480	41-241	72-180
	Median	120	120	120	120	120
	Mean	118	120	114.05	119.59	118.33
	STDEV	16	29	38.40	28.72	15.5
Professional*	Range	55 - 165	23 - 165	--	64-165	64-145.5
	Median	100	93	--	94	93.8
	Mean	102	95	--	95.12	94.9
	STDEV	22	15	--	13.24	12.2
Clinical Education	Range	2 - 51	2 - 93	2 – 90	2-90	2-51
	Median	25	22	22	22	22
	Mean	25	25	24.79	25.14	24.53
	STDEV	12	11	10.07	10.78	8.55

-- Not available.

* Professional excluding clinical education.

Figure 4 Credit hours in classroom/laboratory and clinical education



Clinical Education

Table 9 Average length of final clinical education experience 2015 – 19

		2015	2016	2017	2018	2019
Number of weeks in final clinical experience	Range	5 – 52	6-50	20 - 56	4-50	4-50
	Mean	23	21	21.4	21.7	21.6
	Median	19	19.5	20	20	20

Outcomes

Table 10 Sum of all degrees conferred 2009 – 19

	2009	2010	2011	2012	2014	2015	2016	2017	2018	2019
Total	6,373	6,458	7,423	7,998	8,806	9,389	9,743	10,292	10,585	10,545

Table 11 Graduation rates 2011 – 19 (%)

	2011	2012	2013	2015	2016	2017	2018	2019*
Range	47 – 100	70 – 100	60 – 100	78-100	65-100	56.2-100	53.3-100	76.7-100
Mean	90.1	96.1	91.9	95.9	96.7	96	93.7	96.4
Median	91.6	99	94	94	97	97.2	95.2	97.8
STDEV	7.8	10.6	7.7	4.7	5.4	5	6.4	4.5

Rates based on the percentage of students admitted to the professional program who complete the program within 150% of the time normally expected for completion.

*A new method of collecting and calculating the graduation rate was piloted on the 2019 AAR

Table 12 Employment rates at 12 months post-graduation 2010 – 19 (%)

	2010*	2011*	2012*	2014*	2015*	2016	2017	2018	2019
Range	85 – 100	83 – 100	83 – 100	92 – 100	90-100	91-100	90-100	87-100	91-100
Mean	99.6	99.5	99.5	99	99.1	99.4	99	99.6	99.7

* To the best of the program's ability to determine, the % of graduates employed within 12 months of passing the licensure exam (of those who sought employment).

Table 13 Pass rates of first time takers on licensure exam 2008 – 19(%)

	2008§	2009§	2011§	2012§	2014§	2015**	2017	2018	2019
Range	25 – 100	38 – 100	0 – 100	47 – 100	0 – 100	25-100	48-100	50-100	46.15-100
Mean	83.9	86.5	88.2	87.7	91	91	92.8	92.4	90.8
Median	87	90	92.5	90-9	94	93.6	94.89	95.0	92.7
STDEV	13.9	12.2	13.9	11.71	10	10.6	8	8.9	9

NOTE Based on data provided by FSBPT: ** on 4/18/2007; § on 4/11/2012 for data current as of March 31, 2012; on April 17, 2013; on April 2, 2015; on April 13, 2016, December 2, 2016, December 2017, December 2018, December 2019.

Table 14 Number of programs by pass rate of first time takers 2008 – 19

	2008*	2009	2011	2012§	2014§	2015§	2016§	2017§	2018§	2019§
0-9%						2				
10-19%										
20-29%	1		1				1			
30-39%	3	1	1			1				
40-49%			1	1				1		1
50-59%	7	5	4	8	6	4	5	1	5	4
60-69%	15	15	3	10	6	6	7	2	2	
70-79%	31	24	27	22	15	16	15	12	11	20
80-89%	53	49	40	45	41	39	48	44	40	61
90-99%	57	77	84	96	112	113	108	116	132	123
100%	20	21	36	27	36	35	43	52	49	39
N=	187	191	197	209	216	218	227	228	239	248

NOTE Based on data provided by FSBPT: * on 4/11/2008; § on 4/11/2012 for data current as of March 31, 2012; on April 17, 2013; on April 2, 2015; on April 13, 2016; on December 2, 2016, December 2017, December 2018, December 2019.

STUDENT DATA

Admissions

Table 15 Average trends in admissions 2012 – 19

		*2012	2014	2015	2016	2017	2018	2019
Planned class size	Range	10 – 95	12 – 117	12-100	6 -109	12-100	6-100	6-100
	Mean	42	44	50	45	45	45	45
Applicants	Range	14 – 1,662	17 – 1,870	17 – 1,500	12 – 1,512	32-2,077	40-1,805	34-1,951
	Mean	428	471	516	500	502	499	440
Qualified Applicants	Range	14 – 1,193	14 – 1,398	3 – 1,271	6 – 1,283	19-1,423	23-1,525	10-1,355
	Mean	284	289	328	336	330	312	281
Applicants Offered place in class	Range	14 – 406	14 – 370	3 - 279	5 - 404	2-366	8-465	5-481
	Mean	86	87	92	87	86	91	93
Applicants enrolled	Range	10 – 96	8 – 117	3 - 102	3 - 96	10-101	4-104	3-99
	Mean	42	44	49.4	44	46	45	45
Minority students enrolled	Range	0 – 36	1 – 50	1 - 54	0-49	0-47	0-54	0-60
	Mean	7	10	18	9	11	11	12
GPA of students enrolled	Range	3.1 – 3.9	3.05 – 3.77	3.13 – 4.0	3.09 - 3.89	3.10-3.88	3.2-3.88	3.15-3.9
	Mean	3.5	3.5	3.5	3.6	3.6	3.6	3.6

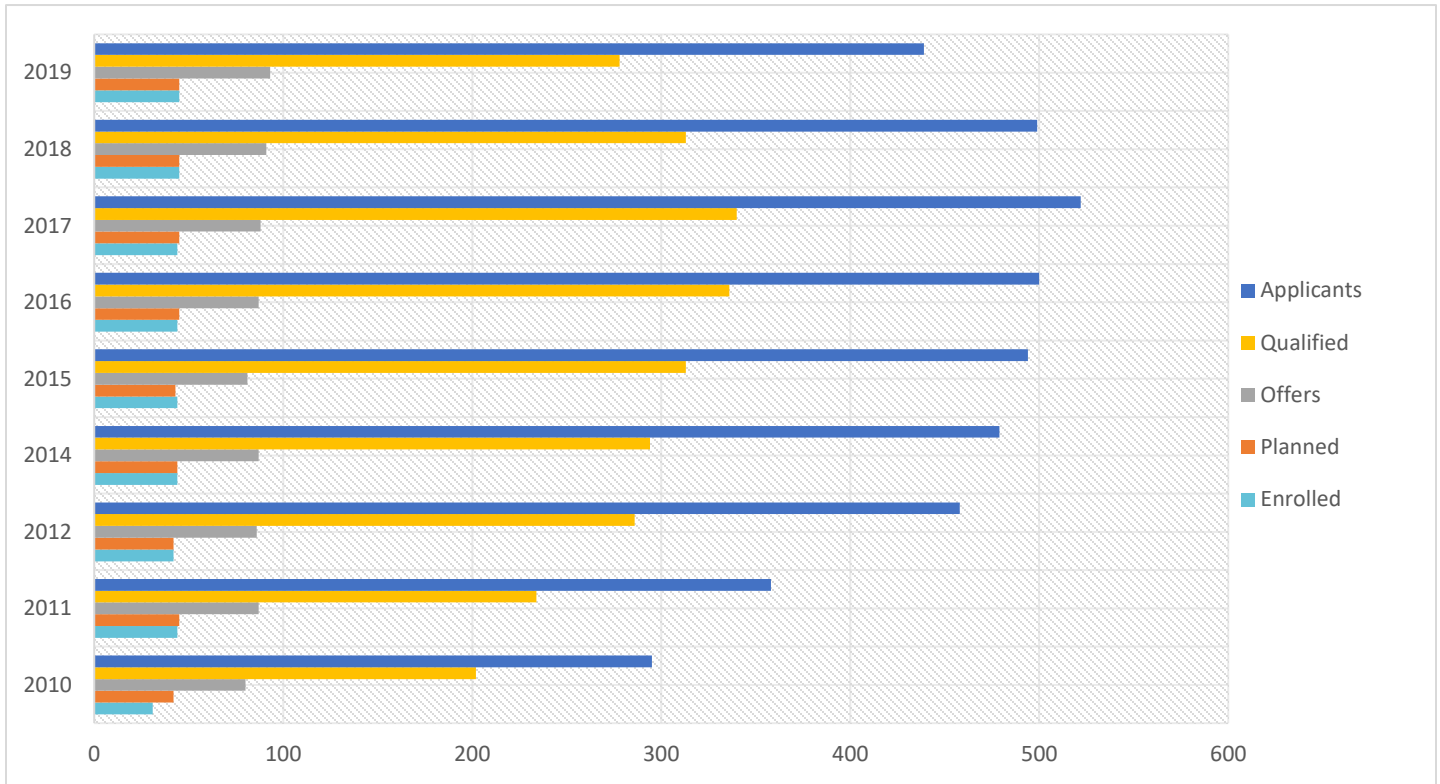
*Starting in 2012, expansion programs are required to report admission data separate from parent program.

Table 16 Average trends in admissions by public and private institution 2011 – 19

		Public							
		2011	2012*	2014	2015	2016	2017	2018	2019
Planned class size	Range	14 – 102	14 – 87	12 – 91	12 - 89	14 – 97	12-70	12-72	12-70
	Mean	39	39	41	44	36	42	41	41
Applicants	Range	81 – 1,354	58 – 1,662	24 – 1,447	26 – 1,459	21 – 404	44-2,077	46-1,805	47-1,590
	Mean	321	400	472	484.8	148	537	512	465
Qualified Applicants	Range	37 – 982	30 – 1,193	16 – 1,398	3 – 1,097	4 – 297	27-1,423	23-1,242	29-1,160
	Mean	212	267	312	323.6	107	368	344	311
Applicants Offered place in class	Range	14 – 202	14 – 187	16 – 370	18 – 279	16 – 150	21-193	18-252	20-341
	Mean	71	71	79	80	53	80	83	87
Applicants enrolled	Range	14 – 102	14 – 87	8 – 91	12 - 89	8 – 97	12-71	12-72	12-72
	Mean	39	40	41	43	35	42	42	42
Minority students enrolled	Range	0 – 35	0 – 29	0 – 40	0 - 36	0 – 38	0-37	0-54	0-45
	Mean	6	6	7	12	5	10	11	10
GPA of students enrolled	Range	3.2 – 3.8	3.3 – 3.9	3.3 – 3.9	3.3 – 3.9	2.9 – 3.8	3.10-3.88	3.22-3.88	3.27-3.9
	Mean	3.6	3.6	3.57	3.6	3.49	3.66	3.67	3.65
		Private							
		2011	2012*	2014	2015	2016	2017	2018	2019
Planned class size	Range	20 – 360	10 – 95	14 – 117	17 - 100	10 – 210	12-100	6-100	6-100
	Mean	50	45	47	53	43	48	48	48
Applicants	Range	34 – 1,358	14 – 1,684	17 – 1,870	17 – 1,500	13 – 603	32-1,400	28-1,665	34-1,951
	Mean	402	517	487	497.7	140	474	489	424
Qualified Applicants	Range	26 – 980	14 – 1,184	14 – 992	11 – 1,271	3 – 492	19-1,294	26-1,525	10-1,355
	Mean	102	101	95	318.5	62	299	288	259
Applicants Offered place in class	Range	14 – 456	16 – 106	14 – 736	12 - 253	3 – 244	2-366	8-465	5-481
	Mean	102	101	95	91	62	91	98	98
Applicants enrolled	Range	6 – 354	10 – 96	12 – 117	10 - 102	3 – 178	10-101	4-104	3-99
	Mean	48	45	47	51	35	49	48	48
Minority students enrolled	Range	0 – 104	0 – 36	1 – 50	1 - 54	0 – 47	0-47	0-52	0-16
	Mean	8	8	10	17.5	7	12	11	13
GPA of students enrolled	Range	3.1 – 3.9	3.1 – 3.8	3.1 – 3.8	3.1 – 4.0	2.9 – 3.8	3.13-3.80	3.2-3.88	3.15-3.78
	Mean	3.47	3.47	3.5	3.5	3.37	3.51	3.52	3.52

*Starting in 2012, expansion programs are required to report admission data separate from parent program.

Figure 5 Trends in admission for DPT programs 2010 – 19 (Mean)



Enrollment

Table 17 Percentage of students enrolled in programs, by race/ethnicity (%)

	2011-12 N = 24,848	2012-13 N = 25,945	2014-15 N = 28,514	2015-16 N = 31,426	2016-17 N = 31,380	2017-18 N = 32,417	2018-19 N = 34,218	2019-20 N = 34,202
African American	3.4	3.3	3.1	3	3.0	3.3	3.4	3.8
American Indian / Alaskan Native	0.4	0.4	0.4	0.4	0.5	0.4	0.4	0.3
Asian	5.9	6.2	6.7	6.8	7.4	8.2	8.9	9.7
Caucasian	81.3	80.6	79	77.5	77.1	75.9	74.6	72.5
Hispanic/Latino	4	4.9	4.7	4.4	5.8	6.3	6.5	7.1
Native Hawaiian / Other Pacific Islander	0.5	0.4	0.5	0.4	0.4	0.3	0.3	0.4
Two or more races	0.8	1	1.3	2.1	2.7	2.4	3	3.4
Unknown	3.7	4.1	4.3	4.1	3.2	3.1	3.00	3

Graduates

Table 18 Ethnicity of Graduates of Physical Therapist Programs

	2019
	N=10,545
African American	3.3%
American Indian/Alaskan Native	0.4%
Asian	8.0%
Hawaiian Native/Pacific Islander	0.3%
Hispanic/Latino	6.2%
White	76.7%
Other	2.4%
Unknown	2.7%

Table 19 Enrollment by Sex

		Female			Male			Other/No Answer*			Total		
		2017	2018	2019	2017	2018	2019	2017	2018	2019	2017	2018	2019
Number of students in all programs		20,393	21,131	20,993	12,437	13,074	13,187	10	13	15	32,417	34,218	34,202
Number of students per program	Mean Range	84.62 6-259	84 4-246	85 19-256	51.61 2-247	52 1-253	53 13-296	0.04 0 - 2	.05 0-2	.06 0-3	136.27 8-438	136.33 5-464	138 36-563

- Option added as of 2017 AAR for Student and Faculty Gender 'Other/Choose Not To Answer'

FACULTY DATA

Number of Faculty

Table 20 Number of core and associated faculty 2019 (accredited and candidacy programs)

Totals (Core)	
Total number of full-time core faculty positions	2,815
Total number of part-time core faculty positions	190
Mean (Core)	
Full-time core faculty positions	11
Part-time core faculty positions	0.7
Core faculty FTEs	13.8
Total and Mean (Associated)	
Total number of Adjunct/Associated Faculty	2,198
Number of associated faculty – Mean	9
Total FTE of associated faculty – Mean	1.8

Table 21 Average number of core faculty vacancies 2019 (accredited and candidacy programs)

Totals	
Total current vacancies in allocated positions	166
Total projected vacancies in allocated positions	117
Total number of new positions to be filled	48

Ratios

Table 22 Ratio of students per core faculty and laboratory faculty member 2019 (accredited programs)

Number of students per core faculty member	12.1
Number of students per faculty member in laboratory experiences	13.4

Workload

Table 23 Percentage of faculty by workload (%) 2019 (accredited programs)

	% of Time Devoted to					
	Teaching Entry-level Program	Other Programs	Scholarship	Administration	Service	Clinical Practice
Program Director (239)	27.20	2.07	14.57	43.81	10.38	2.45
DCE (303)	39.29	0.58	10.56	35.13	9.85	4.23
Other Faculty (2,225)	50.87	2.99	21.80	6.77	11.54	5.56

Scholarship & Grants

Table 24 Scholarship productivity of core faculty 2019 (accredited programs)

Total number of peer reviewed articles	3,084
Total number of other articles	533
Total number of books or book chapters	439
Total number of presentations	6,446
Total number of other scholarly products subjected to external review and disseminated	403
Total number of papers, proposals, etc. submitted but not yet accepted or published	2,370
Mean (per Program)	
Peer reviewed articles (excluding abstracts)	12.4
Other articles accepted or published	2.1
Books or book chapters published	1.8
Presentations	25.9
Other scholarly products subjected to external review and disseminated	1.6
Papers, proposals, etc. submitted but not yet accepted or published	9.5

Table 25 Grants and grant funding FY 2019 – 20 (accredited programs)

Total for All Programs		
Total number of core faculty with grant funding		837
Total amount of grant funding		\$752,828,174
Total amount of above funding from NIH		\$456,507,912
Total number of core faculty who submitted proposals for funding, not funded or are not yet funded		1,022
Per Program		
Number of core faculty with grant funding (per program)	Range	0-17
	Mean	3.4
Amount of grant funding (per program)	Range	\$0-64,548,040
	Mean	\$3,023,406
Amount of funding from NIH (per program)	Range	\$0-\$47,648,295
	Mean	\$1,833,365
Number of core faculty who submitted proposals for funding that were not funded or are not yet funded (per program)	Range	0-70
	Mean	4

Clinical Specialists

Table 26 Number of core faculty who are certified clinical specialists 2010 – 20 (accredited programs)

	2010 – 11	2011 – 12	2012 – 13	2014 – 15	2015 – 16	2016 – 17	2017- 2018	2018- 2019	2019- 2020 (2,768)
Total	746	828	891	1,103	1,196	1,268	1,327	1,287	1,302
%	35.1	37.6	37.4	39.9	41.9	43.7	45.7	47.1	47

Faculty Demographics

Table 27 Number of faculty by race/ethnicity 2019 (accredited programs)

	Program Director	DCE	Other Faculty	All Core Faculty	Associated
Black or African American	6	13	51	70	63
American Indian/Alaskan Native	0	2	2	4	2
Asian	8	9	167	184	119
White	214	270	1,866	2,350	1,926
Hispanic/Latino of any race	6	7	86	99	83
Native Hawaiian/Pacific Islander	0	0	3	3	16
Two or more races	5	1	28	34	21
Unknown	0	1	18	21	193
Total	239	303	2,221	2,765	2,423

(2 core and 13 associated did not provide race data and are counted as Unknown)

Degrees Held, Rank, Tenure Status

Figure 6 Percentage of highest academic degree held by all core faculty 2019 (accredited programs)

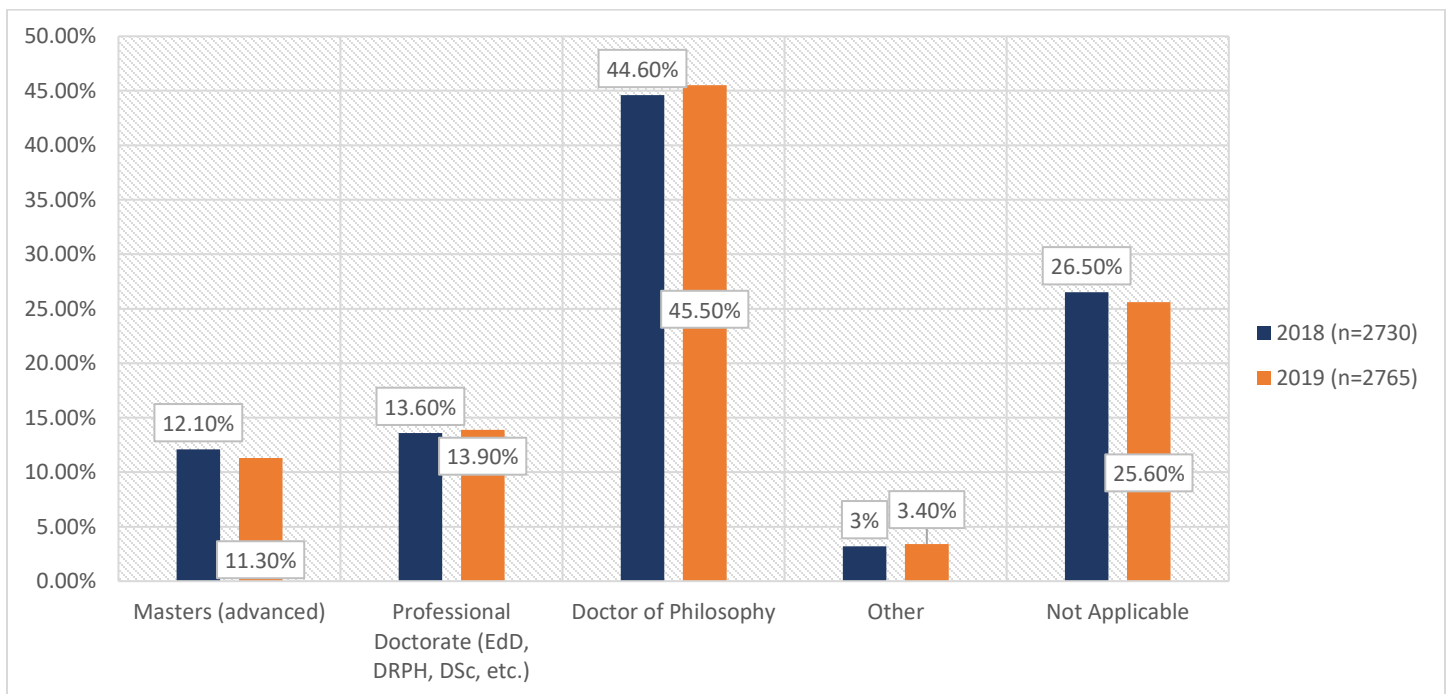


Figure 7 Percentage of core faculty ranks 2014 – 19 (accredited programs)

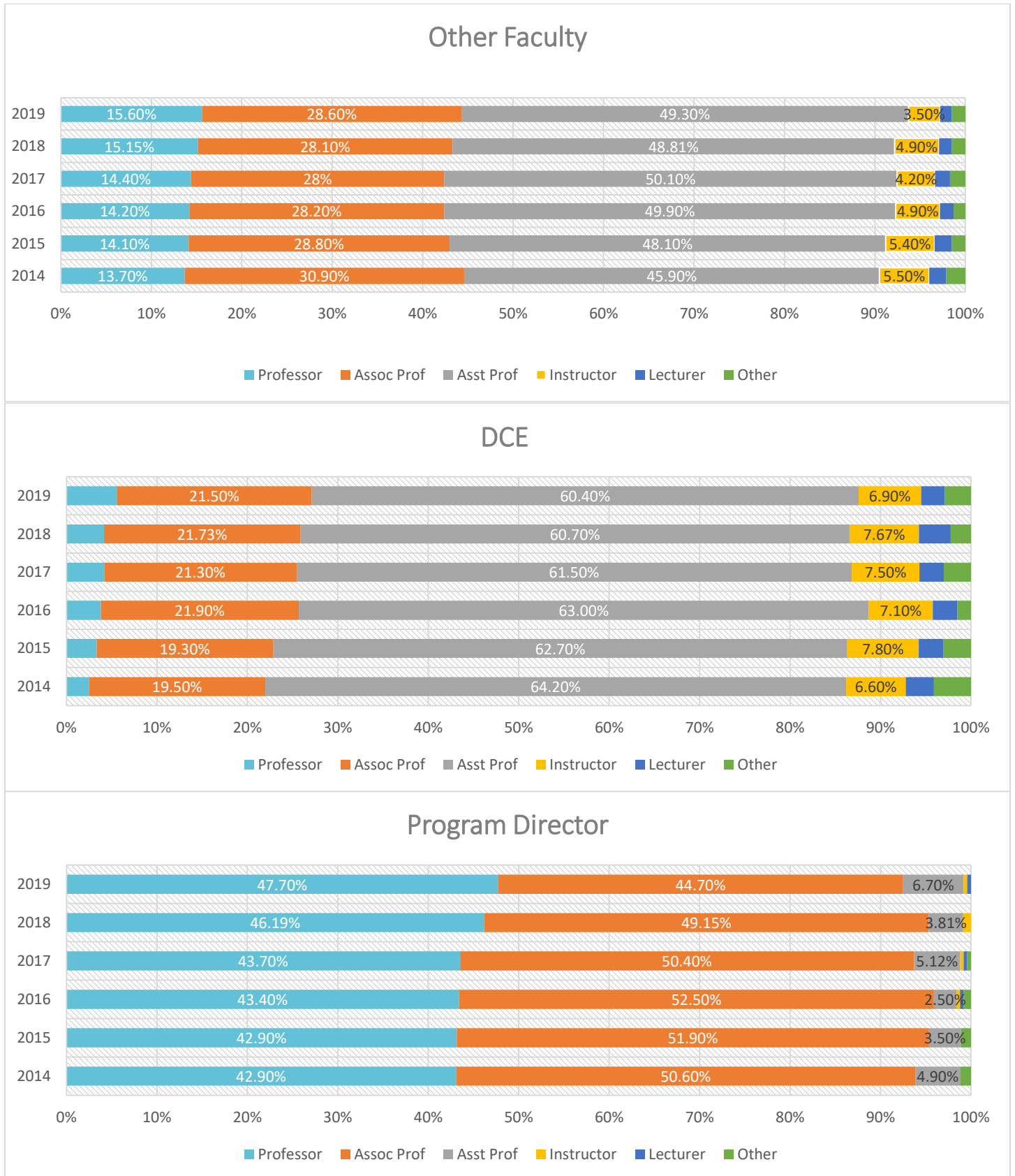


Table 28 Percentage of core faculty ranks 2016 – 19 (accredited programs)

	Other Faculty				DCE				Program Director			
	2016	2017	2018	2019	2016	2017	2018	2019	2016	2017	2018	2019
Professor	14.2	14.4	15.1	15.7	3.8	4.2	4.1	5.6	43.4	43.7	46.2	47.7
Assoc Prof	28.2	28	28.1	28.7	21.9	21.3	21.3	21.5	52.5	50.4	49.2	46
Asst Prof	49.9	50.1	48.8	49.5	63.0	61.5	60.1	60.5	2.5	5.12	3.8	5.8
Instructor	4.9	4.2	4.9	3.5	7.1	7.5	7.6	7	0.4	0.4	.8	0.4
Lecturer	1.5	1.65	1.4	1.3	2.7	2.7	3.5	2.7	0.4	0.4	--	--
Other	1.3	1.7	1.5	1.2	1.5	3	2.2	2.7	0.8	0.4	--	--

--Rounds to zero

Figure 8 Tenure status of core faculty 2019 (accredited programs)

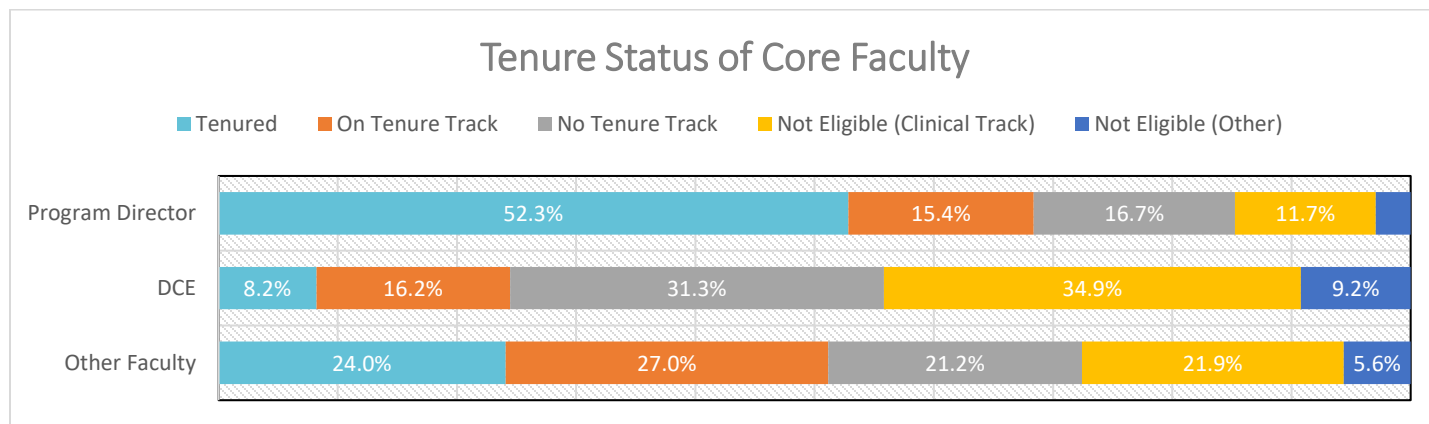


Table 29 Tenure status of core faculty 2019 (accredited programs)

	Other Faculty	DCE	Program Director
Tenured	24%	8.2%	52.3%
On Tenure Track	27%	16.2%	15.4%
No Tenure Track	21.2%	31.3%	16.7%
Not Eligible (Clinical Track)	21.9%	34.9%	11.7%
Not Eligible (Other)	5.6%	9.2%	2.9%